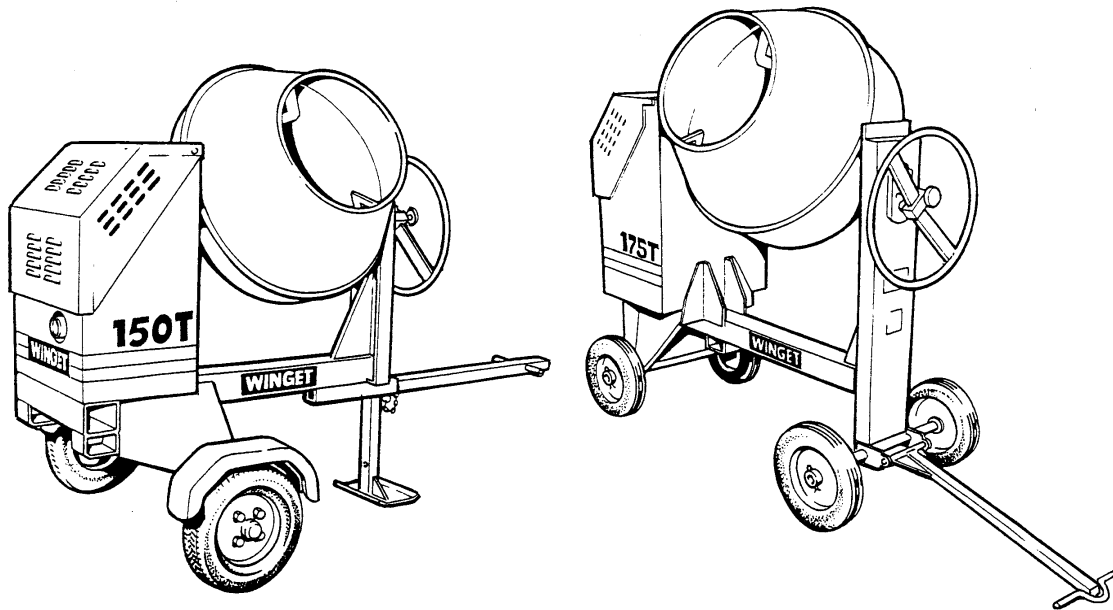


MIXERS

100T_e 150T_e 175T_e



OPERATORS HANDBOOK & PARTS

110V Electric Drive
From Serial Numbers
100T-12194 150T-06183 175T-06183

WINGET

WINGET LIMITED, Edgefold Industrial Estate, Plodder Lane, Bolton, BL4 0LR, UK
Tel: +44 (0) 1204 854650
www.winget.co.uk

service@winget.co.uk

parts@winget.co.uk

CONTENTS

<i>Section</i>	<i>Page</i>
INTRODUCTION	
Introduction	III
Warranty	IV
Safe Working	1.1
Decals	1.3
Lashing down & lifting points	1.6
OPERATION	
Installation	2.1
Electric motors	2.10
SERVICING	
Service schedule	3.1
Lubrication	3.2
Drum drive	3.2
Bolt torques	3.2

*Section**Page***TECHNICAL INFORMATION**

Lubricants	4.1
Mixer drum sealant	4.1
Tyre pressures	4.1
Noise levels	4.1
Drum speed	4.1
Motor specifications	4.1
110V Mixer weights & dimensions	4.2
110V Mixer wiring diagram	4.3

PARTS

Parts breakdowns of 110V Electric Drive components
--

THE HANDBOOK -110V MIXERS

The contents of this Handbook, although correct at the time of publication may be subject to alteration by the Manufactures without notice. Winget Limited operate a policy of continuous product development. Therefore, some illustrations or text within this publication may differ from your machine.

WARNING

The operator must read all the Handbook and fully understand its contents before attempting to operate the machine.

THE HANDBOOK MUST NOT BE REMOVED FROM THE MACHINE.

The Handbook must be kept clean and in good condition. Additional copies of the Handbook can be obtained from your Distributor.

The contents of this Operator's Handbook are designed as a guide to the machine's controls, operation, working capacities and maintenance. It is **not** a training manual.

Only trained operators should use this machine. Contact the C.I.T.B. or equivalent body for advice on training.

In this Handbook are **WARNING** notes. They are preceded by this symbol:

**WARNING**

These notes are used to indicate the procedure being described in the Handbook must be followed to avoid serious injury or death to yourself or to others; or damage to the machine.
The warnings are also used to protect the machine from unsafe servicing practices.

Pay particular attention to the warnings given in the Handbook.

If you have any doubts about any aspect of the machine's capability or servicing procedures, you must consult the manufacturer.

WARRANTY TERMS & CONDITIONS

The Manufacturer assures you that if any part of the machine becomes defective due to faulty manufacture or materials within 12 months from the date of purchase, the part will be repaired or replaced under warranty free of charge by any authorised Winget Distributor. Warranty repairs **must** be carried out by Winget Distributors.

This Warranty is given to the first owner and may be transferred to subsequent owners for the balance of the Warranty period.

The Manufacturer's liability only extends to the costs of repair or replacement of the faulty parts and necessary labour charges involved in the repairs. The Company accepts no liability for any consequential loss, damage or injury, resulting directly or indirectly from any defect in the goods.

Items not covered by Warranty and considered to be the customer's responsibility include normal maintenance services; replacement of service items and consumables; replacement required due to abuse, accident, misuse or improper operation; replacement of wearable items e.g. drive belts, pins, bushes, brake linings, clutch linings etc.

The Warranty will not apply where the equipment is modified, converted, or used for purposes other than those for which it was designed, unless clearance for the modifications etc. have been granted by the Manufacturer, in writing.

The Pre-Delivery Inspection and Warranty Registration Document must be completed correctly and returned to the Manufacturer within 7 days of sale date. Failure to do so may result in the claim being subsequently rejected.

Tyres and tubes are not covered by Warranty, but are covered by the tyre manufacturer's own warranty system which provides against defects in material or workmanship. Engines are covered separately by the engine manufacturers, and engine warranty repairs must be handled by the relevant engine manufacturers' distributors.

No claim will be considered if other than genuine Winget Limited parts, which must be obtained from Winget Limited via an authorised Distributor, are used to effect a repair, or if lubricants other than those recommended by Winget Limited are used.

The equipment must be serviced in accordance with the service schedules laid down by Winget Limited. Evidence that these have been complied with may be required before Warranty Claims are reimbursed.

The Manufacturer's policy is one of continuous improvement. Winget Limited reserve the right to change specifications without notice. No responsibility will be accepted for discrepancies which may occur between specification of machines and the descriptions contained in publications.

Safety is the responsibility of the persons working with this machine. Think “safety” at all times. ***Read and remember the contents of this Handbook.***

MACHINE MODIFICATION

WARNING



Any modifications to the machine will affect its working parameters and safety factors. Refer to the Manufacturers before fitting any non-standard equipment or parts.

The manufacturers accept no responsibility for any modifications made after the machine has left the factory, unless previously agreed by the Manufacturers in writing. The Manufacturers will accept no liability for damage to property, personnel or the machine if failure is brought about due to such modifications, or fitment of spurious parts.

OPERATION

WARNING



Only trained operators should use this machine.

Always be aware of local and national regulations governing the use of the machine.

Always ensure that all guards are in position and correctly fitted.

Electrically driven mixers: Always ensure that the power supply has been correctly connected by a qualified electrician.

Electrical cables must be of a suitably armoured type. Ensure that they are protected from damage and not liable to cause a trip hazard or be driven over.

Do not connect to a household socket!

Use only with an RCD protected supply. Only connect via special feeding point (e.g. power distribution panel on building site with fault-current-breaker).

Only authorised persons should be allowed to operate the mixer, or be in the immediate area.

Never add lubricants to the mixer while it is running.

Never aim water from hoses and pressure washers directly at the electrical inlet, contactor or into the motor terminal box or fan area.

Keep the area around the machine clear of obstructions, which could cause persons to fall onto moving parts.

Keep the body and clothing clear of all moving and hot parts.

Always ensure that during operation the mixer is standing on stable and level ground and that the wheels are chocked or the handbrake is applied.

Keep the motor housing lid closed when the electric motor is running.

Never start or stop the mixer whilst the drum is loaded.

The towing speeds of *Fast Tow* mixers, when used on public highways, may be subject to local or national road traffic regulations.

SERVING & MAINTENANCE

WARNING



Never allow unqualified personnel to attempt to remove or replace any part of the machine, or anyone to remove large or heavy components without adequate lifting equipment.

Before maintenance work is begun, ensure that the electric motor is switched off, and isolated from the mains.

Note: Pressing the stop or emergency stop buttons on the mixer will not isolate the machine from the mains, disconnect the incoming power supply from the appliance inlet under the motor cover.

Always conform to service schedules except when an emergency calls for immediate action, or adverse conditions necessitate more frequent servicing.

Always report any defect at once, before an accident or consequential damage can occur.

On completion of maintenance, check that the machine functions correctly, and that all guards are correctly fitted.

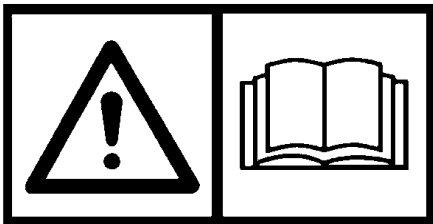
Disposal of waste oil or lubricants. Dispose of waste oil into waste oil storage tanks. If storage tanks are not available, consult your Distributor or local authority for addresses of local designated disposal points. It is illegal

DECALS

Ensure that all warning decals fitted to the mixer are legible. If any should become detached, they must be replaced immediately.

Descriptions of the pictorial decals are as follows:

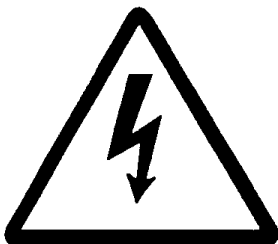
Read Operators Handbook, or Operators Handbook storage place.



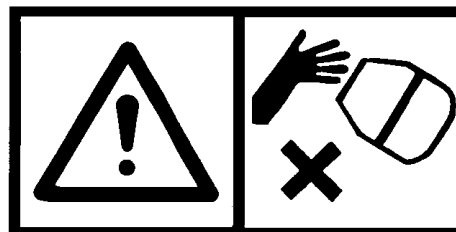
These surfaces may be hot.



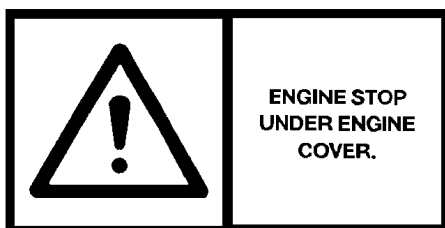
Beware of electrical hazards.



Keep hands clear of drum.



Engine/Motor stop.



Keep clear of chain or belt drives.



Attach lifting hooks to this eye



Lashing down & Lifting points

General

Care should be taken when lifting or transporting the mixer to ensure that lifting or retaining straps are in good condition and the following procedures must be followed when lifting or lashing down to avoid causing unnecessary damage.

It is recommended that chains or webbing slings are used to lift the mixer via the lifting point on the trunnion and that ratchet type webbing straps are used to lash the mixer down.

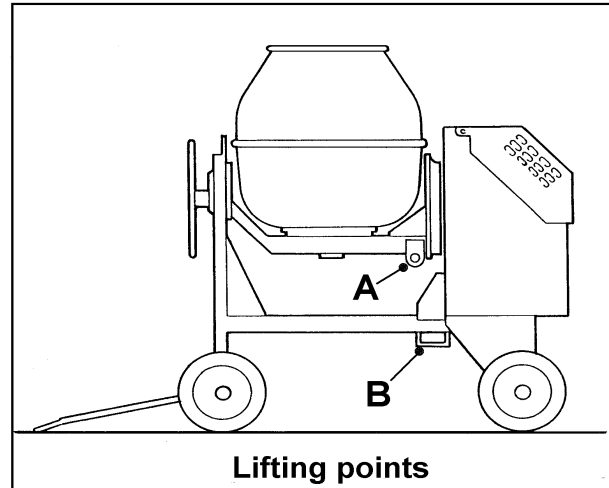
Lifting the Mixer (Crane)

Turn the drum and trunnion through 180deg. and, using the locking pin in the tilting handwheel, lock the assembly in this position with the lifting eye 'A' uppermost. Attach suitable lifting equipment to the lifting eye and slowly take the weight. Do not 'snatch' the mixer otherwise damage may be caused to the lifting point, trunnion or lifting equipment. To prevent the drawbar swinging freely as the mixer clears the ground, rest the drawbar's 'T' handle on the mainframe below the upturned drum. If the mixer is on site and the wheels are immersed in dried concrete or mortar the wheels must be freed before attempts are made to lift the mixer. Be aware that the mixer will tend to swing as it clears the ground.

Lifting the Mixer (Forklift/Telehandler)

Using the tilting handwheel locking plunger, lock the drum upright as illustrated overleaf. If the wheels are immersed in dried concrete or mortar, free them before attempting to lift the mixer.

Spread the fork tines and carefully position the forks below the mainframe so that one



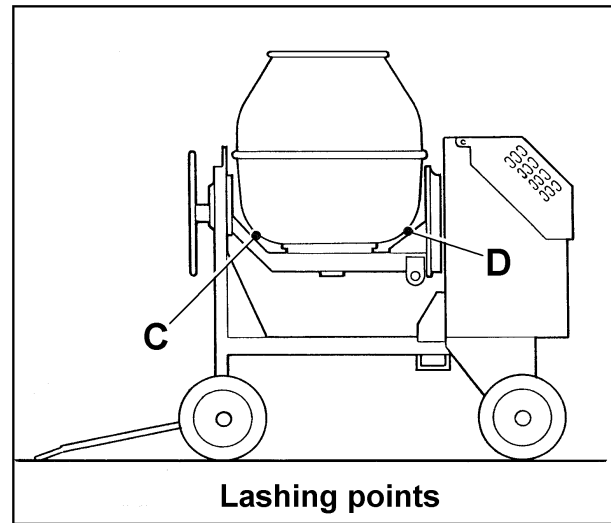
tine enters and passes through the bracket 'B' below the mainframe, the other fork should be spread as wide as possible. Position the carriage as close as possible to the mixer and rest the mixer's drawbar on one of the fork tines to prevent it swinging freely.

Slowly tilt the carriage back slightly to prevent the mixer rocking forward and raise the mixer just clear of the ground. Do not raise the mixer unnecessarily high, keep the height to the minimum required to clear any obstructions without unduly obstructing your forward vision. When travelling keep your speed to the minimum and when loading vehicles do not raise the mixer to the height of the bed until the mixer is close to the vehicle. Similarly when unloading vehicles lower the mixer just clear of the ground as soon as it clears the side of the vehicle.

Lashing Down

It is recommended that unless the mixer is pulled up against a headboard or some form of substantial wheel chocks that two ratchet type webbing straps are used to retain the mixer, one pulling to the rear and one pulling to the front. The drum should be locked in the upright position shown above to keep the centre of gravity as low as possible.

Position the mixer on the vehicle bed and chock the rear wheels or apply the handbrake to prevent it rolling until lashed down. Turn the front axle so that the drawbar is below the mixer and not forming an obstruction on the vehicle bed. Lock the drum in the upright position. Pass one of the webbing straps between the drum and trunnion at point 'C' and secure the strap down to retaining hooks on the vehicle bed in front of the mixer. Pass the second strap between the drum and trunnion at point 'D' and secure the strap down to retaining hooks on the vehicle bed to the rear of the mixer. Tighten the straps by means of the ratchets until the mixer is securely held.



INSTALLING THE MIXER ON SITE

Welded to the mixer are lifting points. These are provided to assist with loading or unloading the mixer and for transportation across site.

WARNING For mixer weights, see "Specifications"



Never carry mixers by their lifting points on public roads.

Do not tow four wheeled mixers across uneven ground.

The ground on which the mixer stands must be level and stable. Ensure that the wheels are chocked or the handbrake is applied.

Stop the motor and disconnect the electrical supply before attempting to move the mixer.

Electrically driven mixers:

Always ensure that the power supply is correctly connected or disconnected to and from the appliance inlet using a suitable cable and plug which is in good condition without exposed wiring or damaged plugs.

Electrical cables must be of a suitably armoured type. Ensure that they are protected from damage and are not liable to cause a trip hazard or be run over.

Do not connect to a household socket!

Use only with an RCD protected supply. Only connect via special feeding point (e.g. power distribution panel on building site with fault-current- breaker).

If connecting via a transformer it's rating must be adequate to power the motor

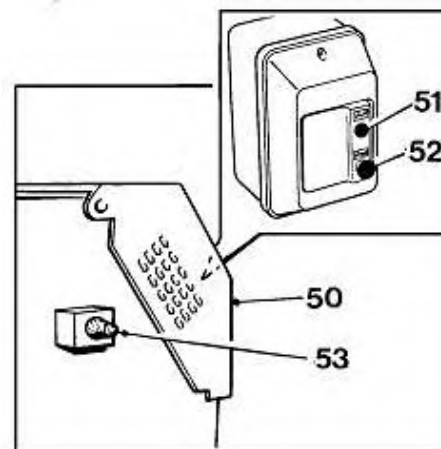
Electric motors

To start and stop:

Gain access to start button by raising the motor housing cover (50).

Start the motor by pressing the green button (51). Lower the motor cover (50).

To stop the motor, raise the cover (50) and press the red button (52). (Pressing button (53) located on the rear cover or closing plate will also stop it.)



WARNING In an EMERGENCY, press button (53) located on the rear panel to stop the motor.



WARNING Pressing buttons (52) or (53) will not isolate the mixer from the mains. The supply must be disconnected from the appliance inlet under the cover (50)



SERVICE SCHEDULE**Every day**

Links, shafts & hinges: Lubricate.

Every week (or 50 hours running) *The above and following items*Nuts, bolts and keys. Tighten (*Each week for first month*):

Drive belts: Check V belt tension .

Drum Bevel Gears: Lubricate with open gear fluid.

Every 125 hours. *The above and following items*

Motor: Clean fan and air inlet

Every 250 hours. *The above and following items*

Nuts, bolts & keys: Tighten.

SERVICING PROCEDURE

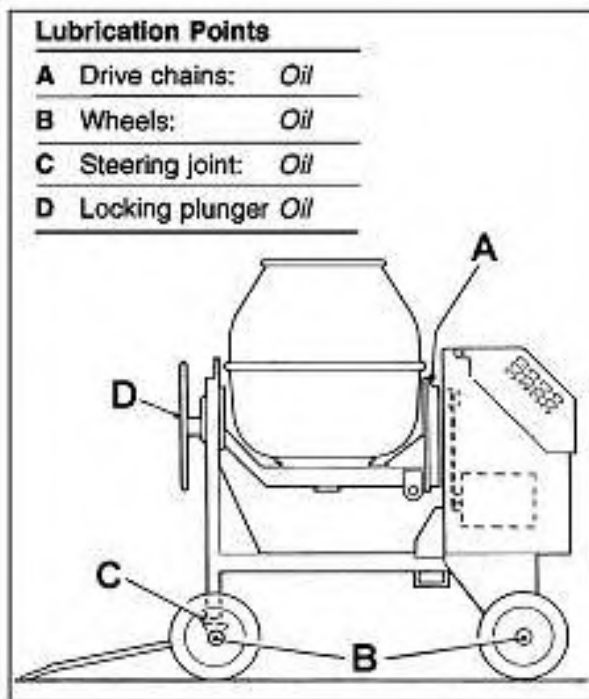
Lubrication

WARNING *It is essential that oils and grease used for servicing do not become contaminated with sand or cement dust.*



Every day

Apply a little engine oil to pins, joints and hinges, wheel shafts etc. to ensure that they move easily and are free from corrosion.



Drum drives

Every week (or 50 hours running)

Drive chains:

Lubricate drive chains (A) with a little engine oil through the oiler on top of the trunnion journal.

Drum drive

Drive belts:

WARNING *NEVER oil belts.*



Check the tension of the belt and adjust if necessary. The belt should deflect no more than 2 to 3 mm using thumb pressure.

Never over-tighten the belt as this may cause vibration and wear.

Bolt torques

Every week for the first month, then every three months

Check the tightness of all bolts, nuts, and keys etc. Pay particular attention to motor mounting bolts.

Lubricants

Mixers are factory filled with the following TOTAL oils or equivalents

Electric motor bearing (where fitted)	Multis EP 2
Drive chain	Rubia B 20W/30
Bevel gear & pinion	Open gear fluid
Drum shaft	Anti-seize compound
Grease nipples (where fitted)	Multis EP 2
Shafts, linkages and hinges	Rubia B 20W/30

Noise levels of mixers.

Measured in accordance with EC Directive 2000/14/EC & UKSI 2001/1701

Models 100T, 150T and 175T

LWA 90
LPA 71 @ 1m drum empty

Drum speed**Handbrake**

20-22 rpm	Tested to hold on a 5° & 10° slope with 600Kg of test weights applied
-----------	---

Tyre pressures

50 lbin ² (Two wheeled "Fast tow" mixers)
--

Mixer drum sealant

Silicone sealant (part number V2000772)

Motors

	Electric motors		
	110v @ 1420 rpm		
100T	1.5kW (2.0hp)		
150T	1.5kW (2.0hp)		
175T	1.5kW (2.0hp)		

IP Rating

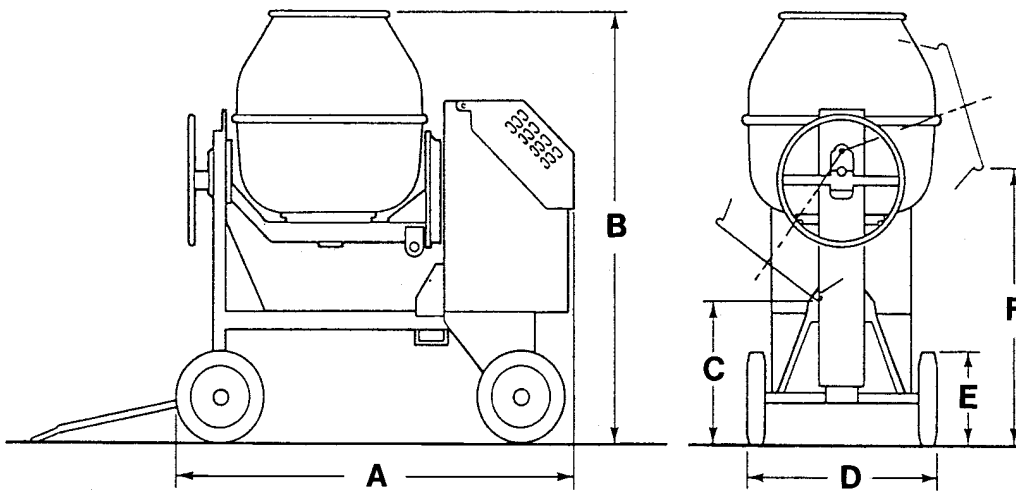
Minimum IP Rating IP55

DIMENSIONS

Four wheel models

	100T	150T	175T
A	1515	1650	1680
B	1560	1730	1780
C	520	555	520
D	800	800	800
E	400	400	400
F	1000	1100	1110

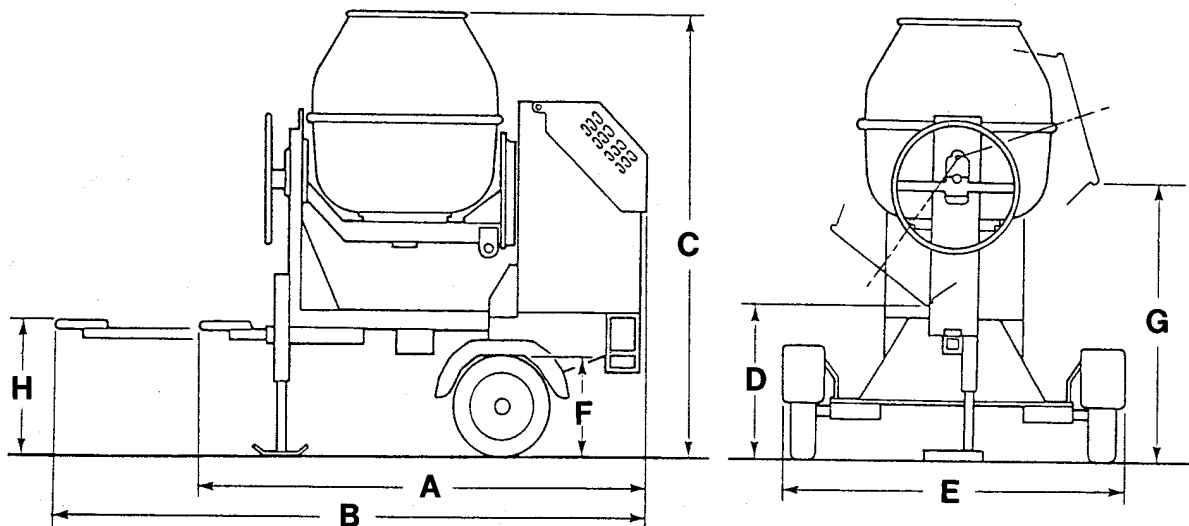
Weight (approx) 110V		
100T	150T	175T
325kg	385kg	405kg



Two wheel models

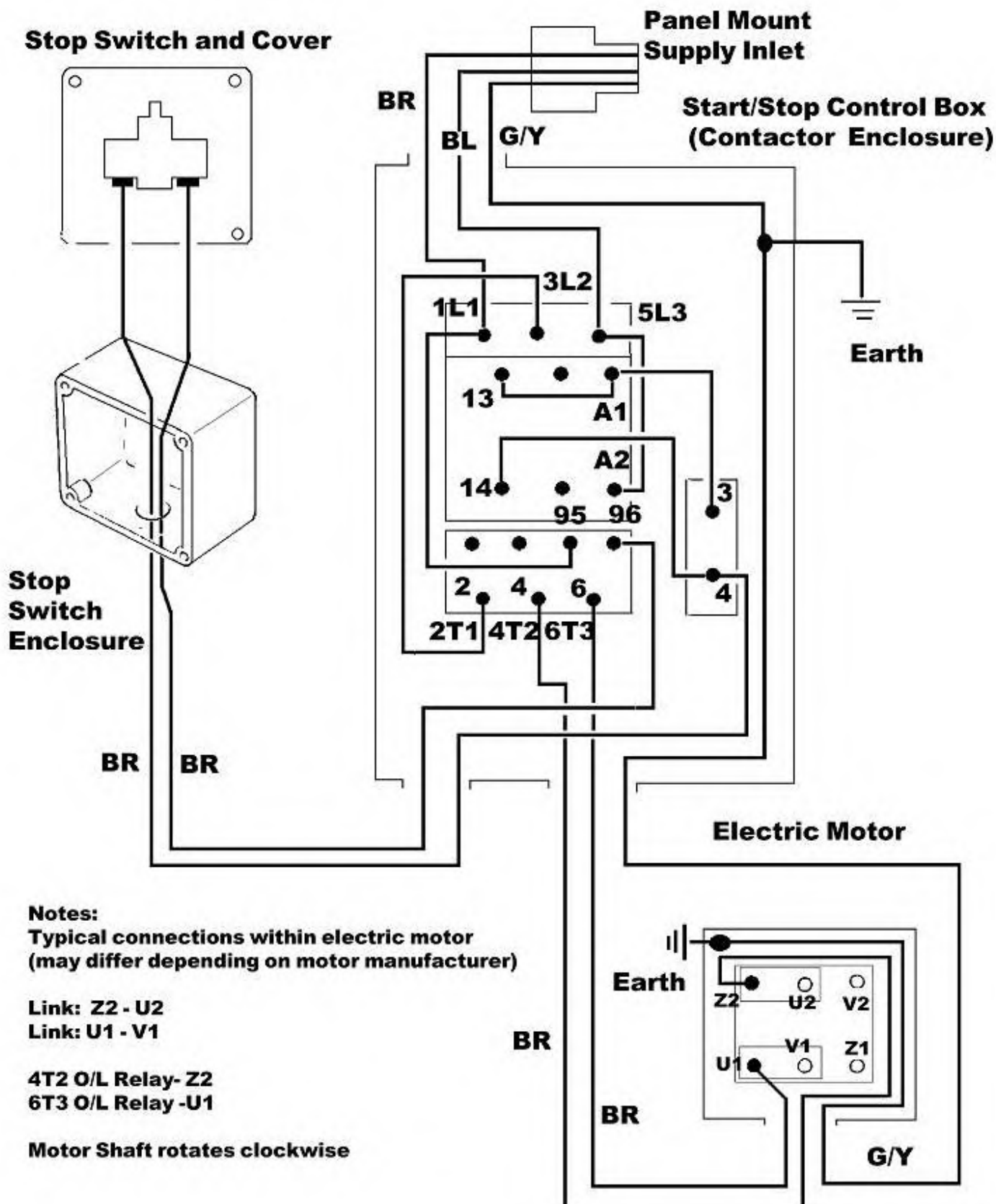
	100T	150T	175T
A	1805	1890	2060
B	2390	2490	2640
C	1610	1760	1840
D	565	600	590
E	1325	1325	1350
F	4.80/4.00-8	145R10	
G	1035	1140	1180
H	490	490	450

Weight (approx) 110V		
100T	150T	175T
350kg	405kg	445kg



ELECTRICALLY DRIVEN MIXERS WIRING CIRCUIT-SCHNEIDER CONTACTOR

Electrical connections must only be made by a suitably qualified/competent person or electrician.



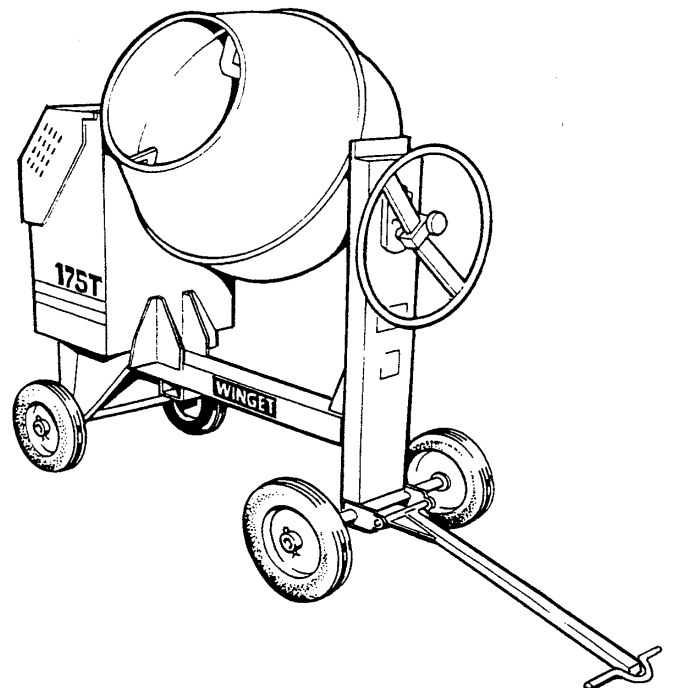
PARTS

110V Mixers

100T_e

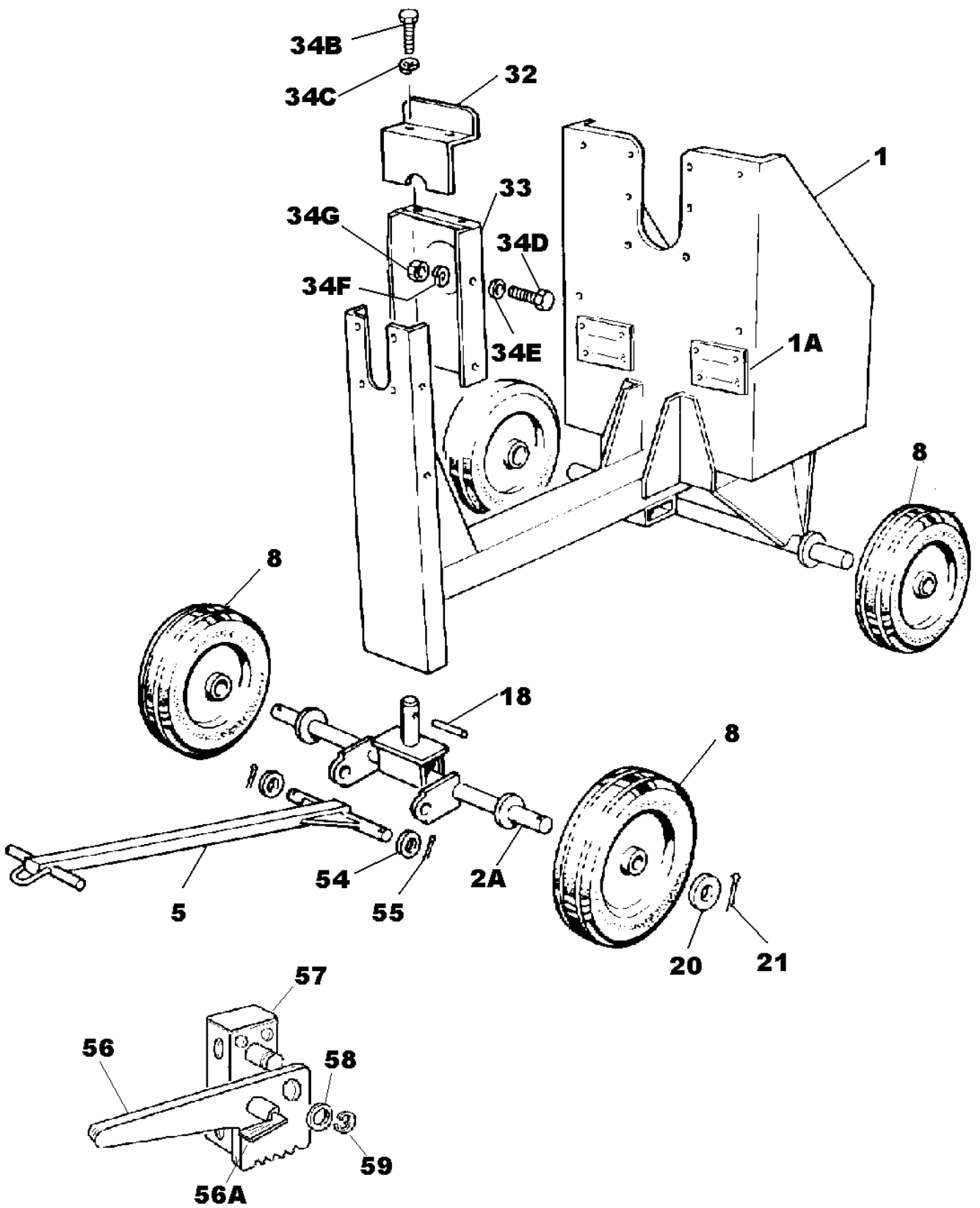
150T_e

175T_e



Contents

FOUR WHEEL MAINFRAME (100Te & 150Te)	A - 1A
FOUR WHEEL MAINFRAME (175Te)	A - 2A
COVERS & GUARDS (100Te & 150Te)	A - 1B
COVERS & GUARDS (175Te)	A - 2B
DRUM	B - 1A
TRUNNION & TILT WHEEL	B - 1B
DRUM DRIVE	B - 1C
ELECTRIC 110V DRIVE ASSEMBLY	C - 2
START SWITCHES 110V ELECTRIC DRIVE	C - 3
DECALS & PLATES	D - 1
MIXER SERVICE KITS	E - 1



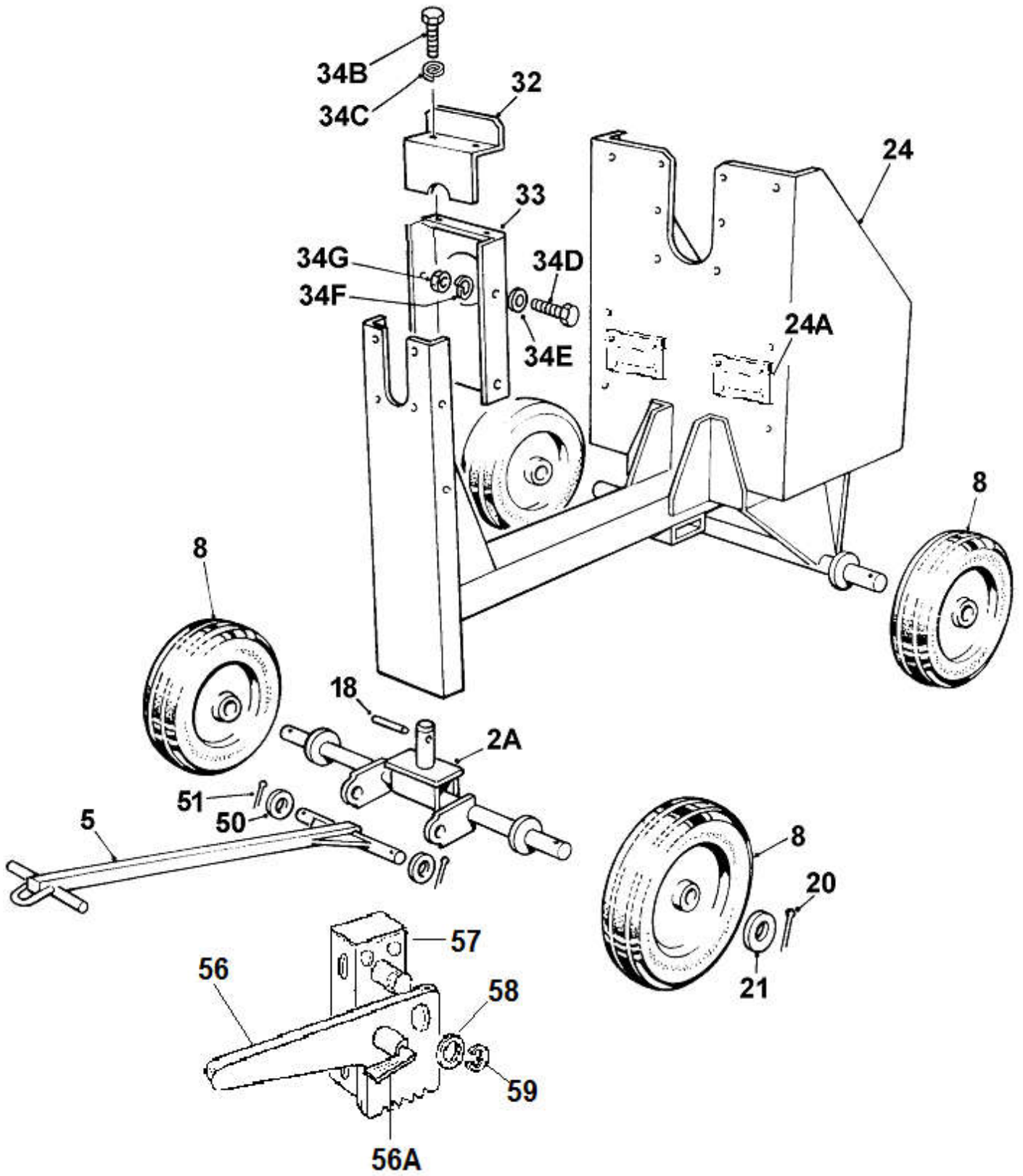
FOUR WHEEL MAINFRAME & TOW BAR (100Te & 150Te)

A - 1A

Item	Part no	Serial no	Description	Qty
1	513340900		MAINFRAME, 100T	1
1A	513371700	11752/	PLATE, vent	2
1B	11S02A		SCREW, set	8
1C	17S03		WASHER, spring	8
1	513341000		MAINFRAME, 150T	1
1A	513371700	05813/	PLATE, vent	2
1B	11S02A		SCREW, set	8
1C	17S03		WASHER, spring	8
2A	513358100		AXLE, front	1
5	513341200		TOWBAR	1
8	475115000		WHEEL, cushion tyre, 405mm dia	4
18	353830650		PIN, spirol	1
20	10S09		WASHER, flat	4
21	44S05G		PIN, split	4
-	513198400		GUARD, tilt wheel, assembly	1
32	513198402		GUARD, upper	1
33	513198401		GUARD, lower	1
34B	11S02B		SCREW, set	2
34C	17S03		WASHER, spring	2
34D	66S03CC	100T /12474 150T /06400	SCREW, set, UNC	4
34E	10S03	100T /12474 150T /06400	WASHER, flat, imperial	4
34F	41S05	100T /12474 150T /06400	WASHER, spring, imperial	4
34G	104S03	100T /12474 150T /06400	Nut, UNC	4
34D	11S03B	12475/ 100T 06401/ 150T	SCREW, set, metric	4
34E	17S04	12475/ 100T 06401/ 150T	WASHER, spring, imperial	4

FOUR WHEEL MAINFRAME & TOW BAR (100Te & 150Te)**A - 1A**

Item	Part no	Serial no	Description	Qty
34F	267S05	12475/ 100T 06401/ 150T	WASHER, flat, metric	4
34G	326S05	12475/ 100T 06401/ 150T	NUT, rivet knurled, metric	4
		11195/ 05637/	100T 150T	
56	513370700		LEVER, handbrake assembly	1
56A	513370800		CATCH, locking, sprung	1
57	513370600		PIVOT, bracket	1
57A	11S04C		SCREW, set, not illustrated	2
57B	17S05		WASHER, spring, not illustrated	2
57C	267S06		WASHER, flat, not illustrated	2
58	10S18		WASHER, flat	1
59	132412010		CIRCLIP	1



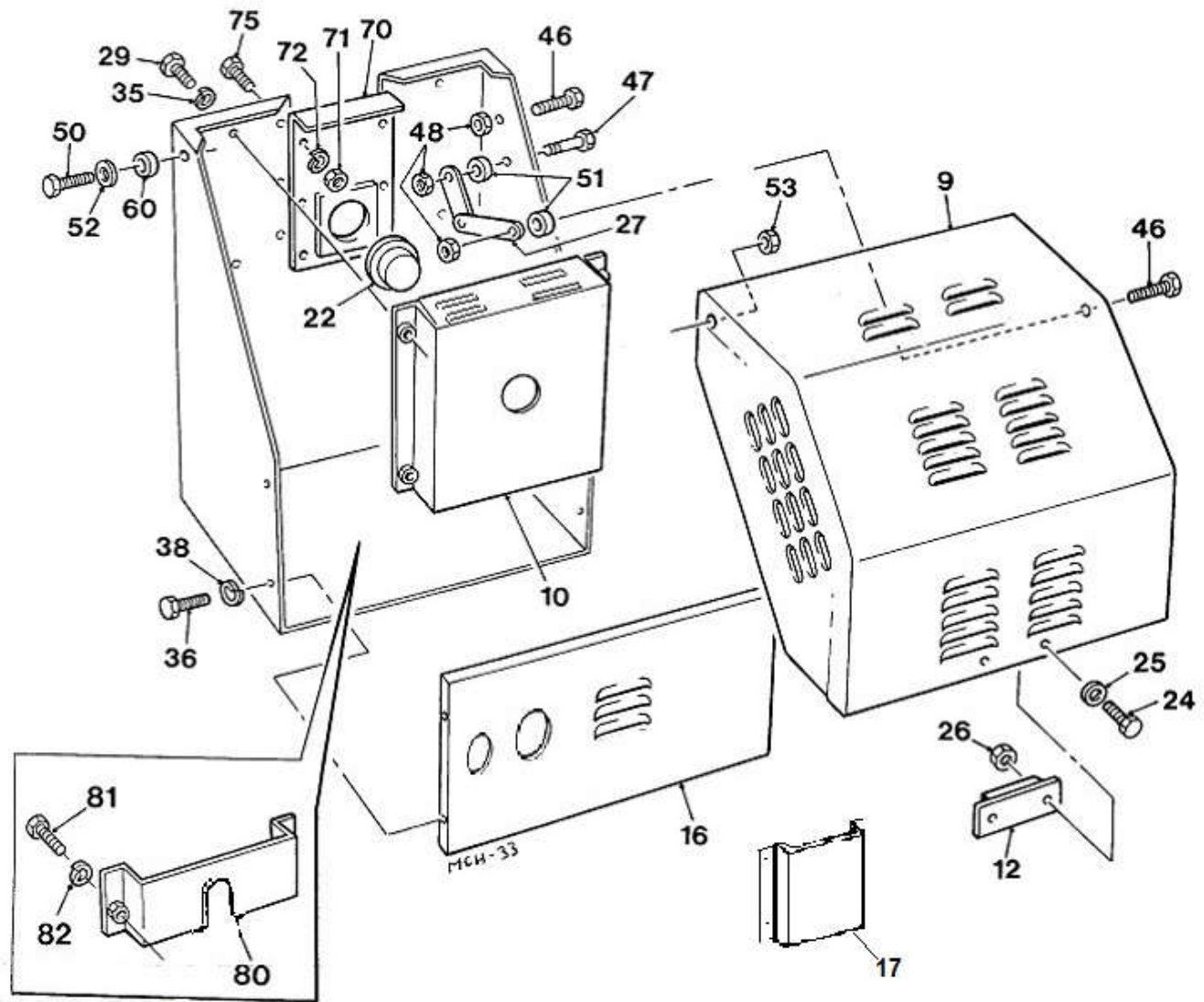
FOUR WHEEL MAINFRAME & TOW BAR (175Te)**A - 2A**

Item	Part no	Serial no	Description	Qty
2A	513358100		AXLE, front	1
8	475115000		WHEEL, cushion tyre, 405mm (16") dia	4
18	353830650		PIN, spirol	1
20	44S05G		PIN, split	4
21	10S09		WASHER, flat	4
24	513269400		MAINFRAME	1
24A	513371700	05811/	PLATE, vent	2
24B	11S02A		SCREW, set	8
24C	17S03		WASHER, spring	8
32	513198402		GUARD, upper	1
33	513198401		GUARD, lower	1
34B	11S02B		SCREW, set	2
34C	17S03		WASHER, spring	2
34D	11S03B		SCREW, set, metric	4
34E	17S04		WASHER, spring, metric	4
34F	267S05		WASHER, flat, metric	4
34G	326S05		NUT, rivet, knurled, metric	4
50	10S17		WASHER, flat	2
51	44S03D		PIN, split	2
56	513370700		LEVER, handbrake assembly	1
56A	513370800		CATCH, locking, sprung	1
57	513370600		PIVOT, bracket	1
57A	11S04C		SCREW, set, not illustrated	2
57B	17S05		WASHER, spring, not illustrated	2
57C	267S06		WASHER, flat, not illustrated	2
58	10S18		WASHER, flat	1
59	132412010		CIRCLIP	1

FOUR WHEEL MAINFRAME & TOW BAR

A - 2A

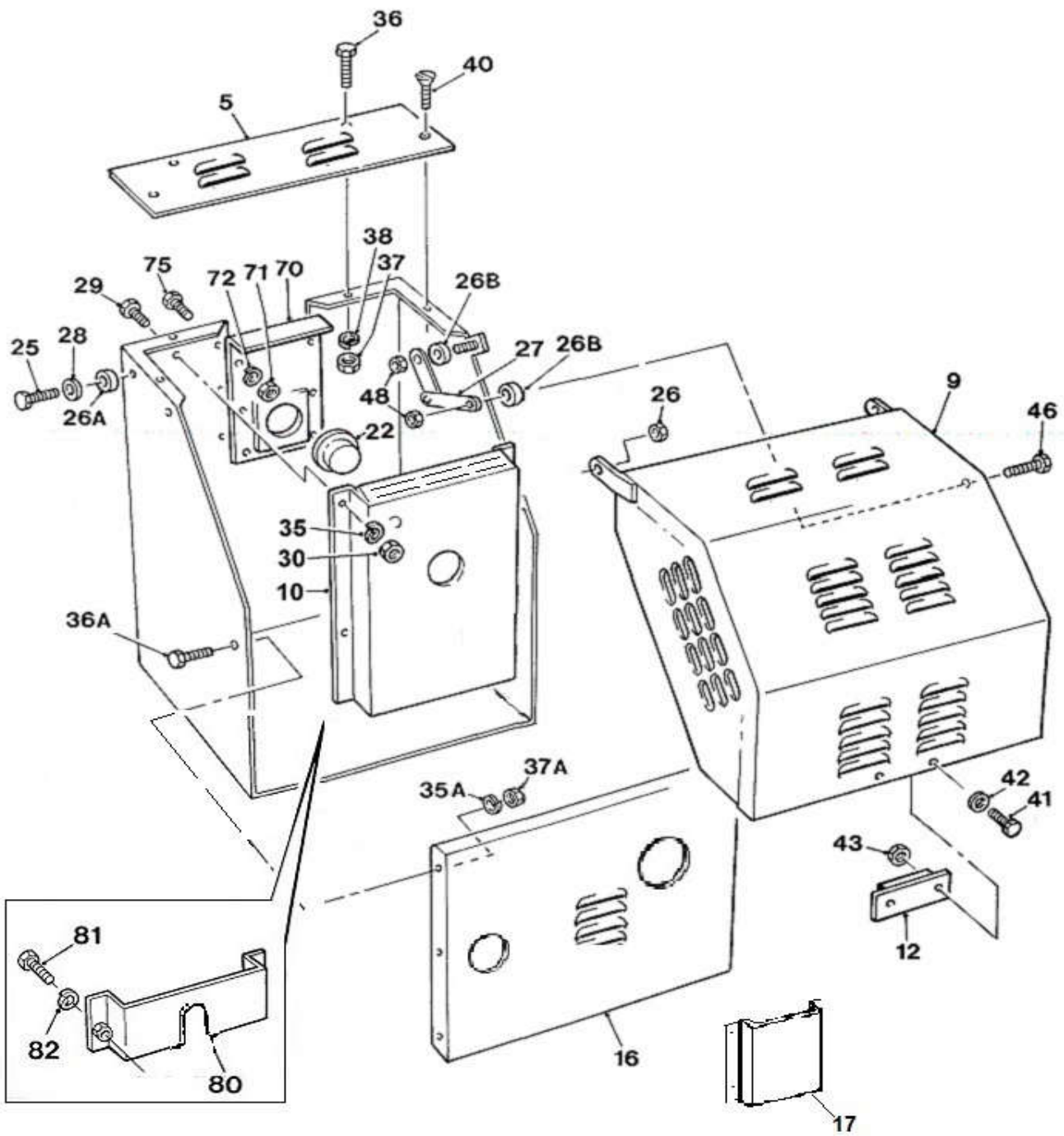
Item	Part no	Serial no	Description	Qty
2A	513358100		AXLE, front	1
8	475115000		WHEEL, cushion tyre, 405mm (16") dia	4
18	353830650		PIN, spirol	1
20	44S05G		PIN, split	4
21	10S09		WASHER, flat	4
24	513269400		MAINFRAME	1
24A	513371700	05811/	PLATE, vent	2
24B	11S02A		SCREW, set	8
24C	17S03		WASHER, spring	8
32	513198402		GUARD, upper	1
33	513198401		GUARD, lower	1
34B	11S02B		SCREW, set	2
34C	17S03		WASHER, spring	2
34D	11S03B		SCREW, set, metric	4
34E	17S04		WASHER, spring, metric	4
34F	267S05		WASHER, flat, metric	4
34G	326S05		NUT, rivet, knurled, metric	4
50	10S17		WASHER, flat	2
51	44S03D		PIN, split	2
56	513370700		LEVER, handbrake assembly	1
56A	513370800		CATCH, locking, sprung	1
57	513370600		PIVOT, bracket	1
57A	11S04C		SCREW, set, not illustrated	2
57B	17S05		WASHER, spring, not illustrated	2
57C	267S06		WASHER, flat, not illustrated	2
58	10S18		WASHER, flat	1
59	132412010		CIRCLIP	1



COVERS & GUARDS 100Te / 150Te 110V

A - 1B

Item	Part no	Serial no	Description	Qty
9	513341300		LID, engine housing	1
10	513371800		GUARD, belt, 100T	1
10	513372400		GUARD, belt, 150T	1
12	513205300		STOP, rubber	1
16	513372000		PLATE, closing, 100T	1
16	513272500		PLATE, closing, 150T	1
17	513372100		BOX, document rivet on inside of item 16	1
17A	101S05B		RIVET, pop	4
22	241859000		PLUG, polythene	1
24	11S02A		SCREW, set	2
25	267S04		WASHER, flat	2
26	61S02		NUT, Binx, self-locking	2
27	513287200		STAY, housing lid	1
29	11S02B		SCREW, set	4
35	17S03		WASHER, spring	4
36	11S02B		SCREW, set	4
38	17S03		WASHER, spring	4
46	11S03D		SCREW, set	2
47	8S03E		BOLT	1
48	61S03		NUT, binx, self-locking	3
50	11S04E		SCREW, set	2
51	513340800		SPACER	2
52	267S06		WASHER, flat	4
53	7S04		NUT	2
60	555170000		SPACER	2
70	513151800		BRACKET, trunnion	1
71	104S03	100T /12773 150T /06182	NUT, unc	6
71	7S04	12774/ 100T 06183/ 150T	NUT, metric	6
72	41S05	100T /12773 150T /06182	WASHER, spring, imperial	6
72	17S05	12774/ 100T 06183/ 150T	WASHER, spring, metric	6
75	66S03CC	100T /12773 150T /06182	SCREW, set, unc	6
75	11S04B	12774/ 100T 06183/ 150T	SCREW, set, metric	6
80	513371900		GUARD, 100T & 150T	6
81	11S02A		SCREW, set	2
82	17S03		WASHER, spring	2



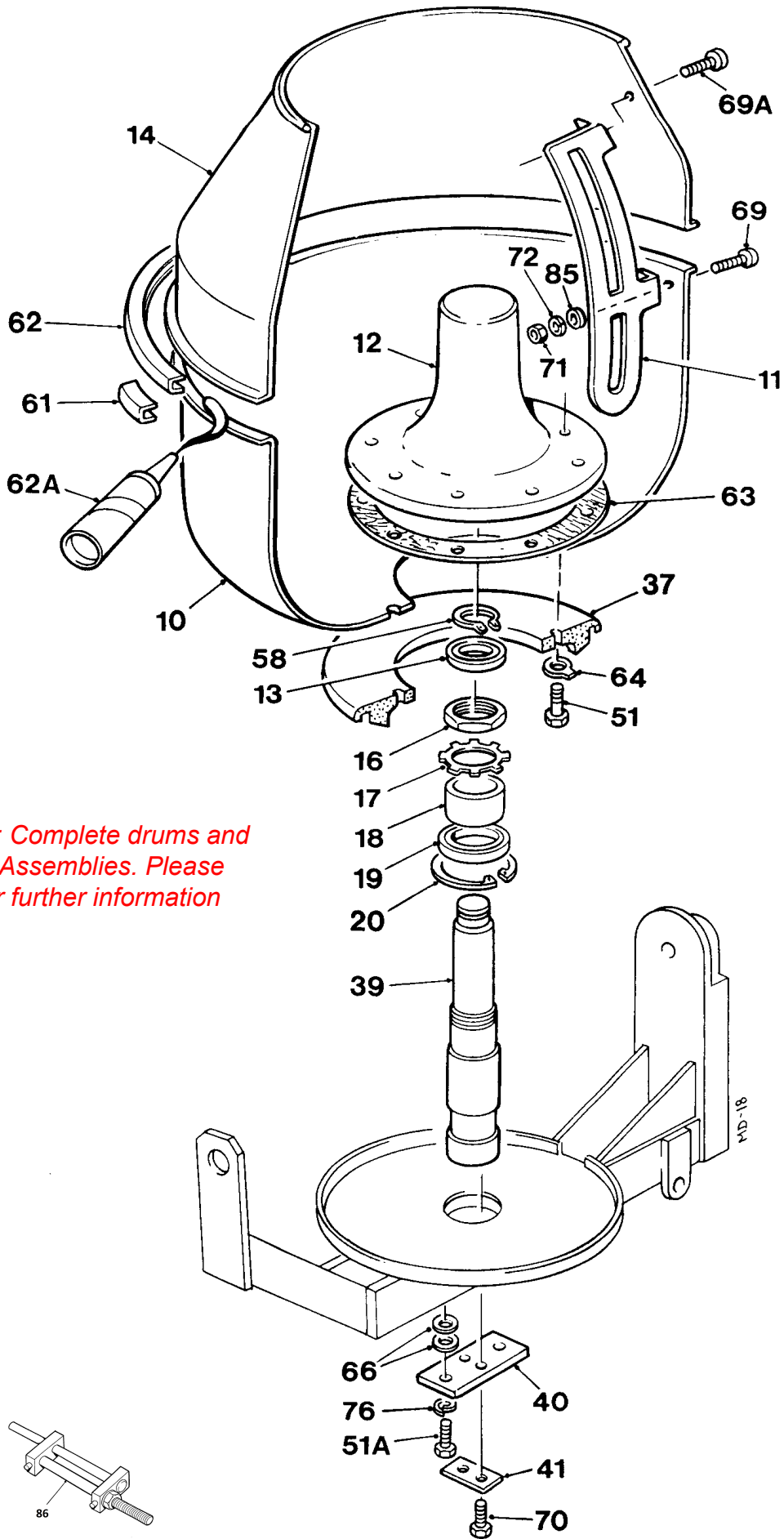
COVERS & GUARDS 175Te 110v

A - 2B

Item	Part no	Serial no	Description	Qty
5	513287000		TOP PLATE, engine housing	1
9	513286800		LID, engine housing	1
10	513372300		GUARD, belt, 110V 175T	1
12	513205300		STOP, rubber	1
16	513372200		PLATE, closing, 110V	1
17	513372100		BOX, document, rivet on insde of item 16	1
17B	101S05B		RIVET, pop	4
22	241859000		PLUG, polythene	1
25	11S04E		SCREW, set	2
26	7S04		NUT	2
26A	555170000		SPACER	2
26B	513340800		SPACER	2
27	513287200		STAY, housing lid	1
28	267S06		WASHER, flat	2
29	66S03CC	/06182	SCREW, set, unc	4
29	11S04B	06183/	SCREW, set, metric	4
30	104S03	/06182	NUT, unc	4
30	7S04	06183/	NUT, metric	4
35	41S05	/06182	WASHER, spring, imperial	4
35	17S05	06183/	WASHER, spring, metric	4
35A	41S05	/06182	WASHER, spring, imperial	6
35A	17S04	06183/	WASHER, spring, metric	6
36	11S02A		SCREW, set	2
36A	66S03CC	/06182	SCREW, set, unc	6
36A	11S03A	06183/	SCREW, set, metric	6
37	7S02		NUT	4
37A	104S03	/06182	NUT, unc	6
37A	7S03	06183/	NUT, metric	6
38	17S03		WASHER, spring	4
40	52S02C		SCREW, c'sunk socket head	2
41	11S02A		SCREW, set	2
42	267S04		WASHER, flat	2
43	61S02		NUT, Binx, self-locking	2
46	8S03E		BOLT	1
48	61S03		NUT, binx	2
70	513151800		BRACKET, trunnion	1
71	104S03	/06182	NUT, unc	6
71	7S04	06183/	NUT, metric	6

B - 1A

100T, 150T & 175T Mixers



Also available : Complete drums and drum centre Assemblies. Please click [here](#) for further information

DRUM**B - 1A**

Item	Part no	Serial no	Description	Qty
10	513152901		BASE, drum, 100T	1
10	513161001		BASE, drum, 150T & 175T	1
11	513151100		BLADE, 100T	2
11	513157500		BLADE, 150T & 175	2
12	513149600		DRUM CENTRE	1
13	88S07D		BEARING	1
14	513152902		CONE, drum, 100T	1
14	513161002		CONE, drum, 150T	1
14	513203202		CONE, drum, 175T	1
16	513208800		NUT, locking	1
17	22096210		WASHER, locking	1
18	513152300		DISTANCE PIECE, drum shaft	1
19	88S20D		BEARING	1
20	132390000		CIRCLIP	1
37	513150100		BEVEL GEAR, drum	1
39	513152200		SHAFT, drum	1
40	513152000		FLANGE, drum shaft	1
41	513152100		WASHER, tab	1
51	66S05D		SCREW	8
51A	28S05G		SCREW	2
58	142330000		CIRCLIP	1
61	513203900		BRIDGE PIECE, 100T	1
61	513203800		BRIDGE PIECE, 150T & 175T	1
62	513203600		CLIP, drum, 100T	1
62	513203100		CLIP, drum, 150T & 175T	1
62A	V2000772		SEALANT	tube 1
63	513202800		GASKET	1
64	513199800		WASHER, tab	6
66	10S04		WASHER, flat	AR
69A	301S06F		SCREW, blade upper, 100T , metric	4
69	301S06H		SCREW, blade lower, 100T , metric	4
69A	301S06H		SCREW, blade upper 150T/175T metric	4
69	301S06J		SCREW, blade lower 150T/175T metric	4

DRUM**B - 1A**

Item	Part no	Serial no	Description	Qty
70	28S05G		SCREW	2
71	104S03		NUT, imperial, obsolete, use	
71	7S04		NUT, metric	8
72	17S05		WASHER, spring, metric	8
76	41S07		WASHER, spring	2
85	267S06		WASHER, flat, metric	8
86	513204000		CLAMP, Drum Clip	1

TRUNNION & TILT WHEEL

B - 1B

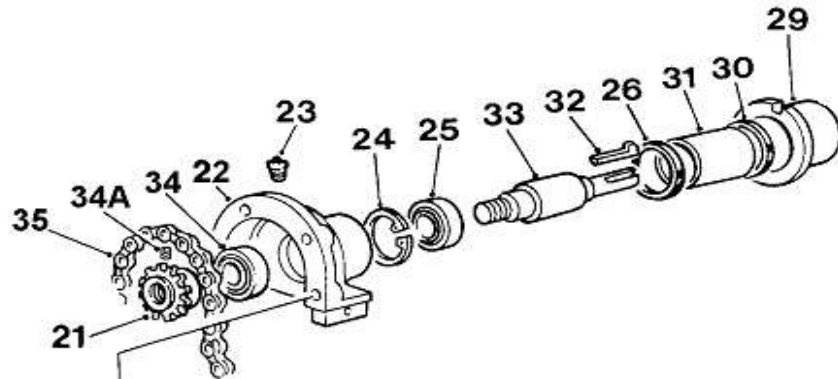
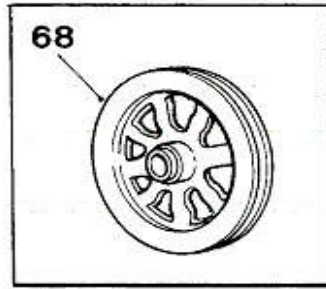
Item	Part no	Serial no	Description	Qty
1	54S01A		PIN, spirol	1
1A	57S06F1		SCREW, grub,	1
2	513194400		PLUNGER, locking	1
2A	513345300		SPRING, plunger	1
3	513345400		HANDWHEEL	1
5	513151000		STUB, trunnion journal	1
-	513149400		BRACKET, tilting, assembly	1
6	-		BRACKET, tilting (order assembly)	1
6A	112821000		BUSH	2
6B	103S04C		SCREW, socket head cap	4
6C	114625320		BUSH	3
6D	513212300		RETAINING BAR, tilting bracket	2
7	225520280		FELT SEAL	1
7A	10S09		WASHER, flat	AR
8	112820000		BUSH	2
9	513149300		GEAR, tilting	1
15	6S03E		BOLT	4
36	513211400		TRUNNION, 100T	1
36	513211500		TRUNNION, 150T & 175T	1
36A	513212000		PLATE, upper (welded)	1
36B	513212000		PLATE, lower (welded)	1
38	513153000		GUARD, bevel gear	1
42	513152700		GUARD, chain, 100T	1
42	513203300		GUARD, chain, 150T & 175T	1
52	513345600		PINION, tilting	1
53	10S18		WASHER, flat	1
54	225514220		WASHER, felt	2
56	513374900		PIN, grooved	1
57	55S07Q		PIN, spirol	1
71	7S04		NUT, metric	4
72	17S05		WASHER, spring, metric	4
75	11S03B		SCREW, set, metric	4

TRUNNION & TILT WHEEL**B - 1B**

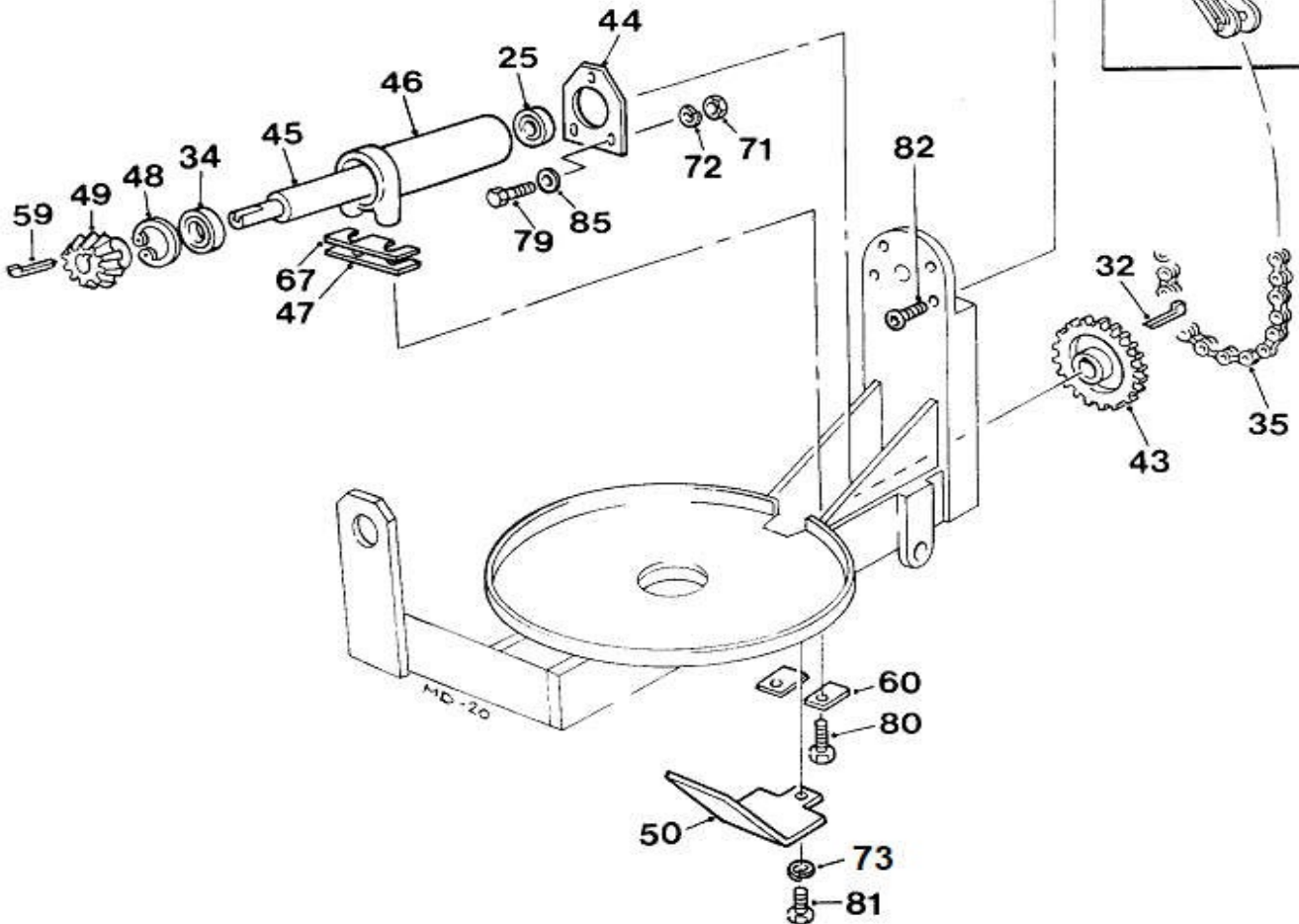
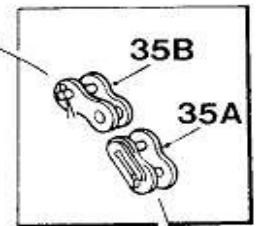
Item	Part no	Serial no	Description	Qty
77	66S02CC		SCREW, set	2
78	41S04		WASHER, spring	2
85	10S03		WASHER, flat	4
86	107S14		NUT, 'Nyloc' self-locking	4

B - 1C

100T, 150T & 175T Mixers



Also Available :
complete driveline
assemblies. Please
click [here](#) for
further information

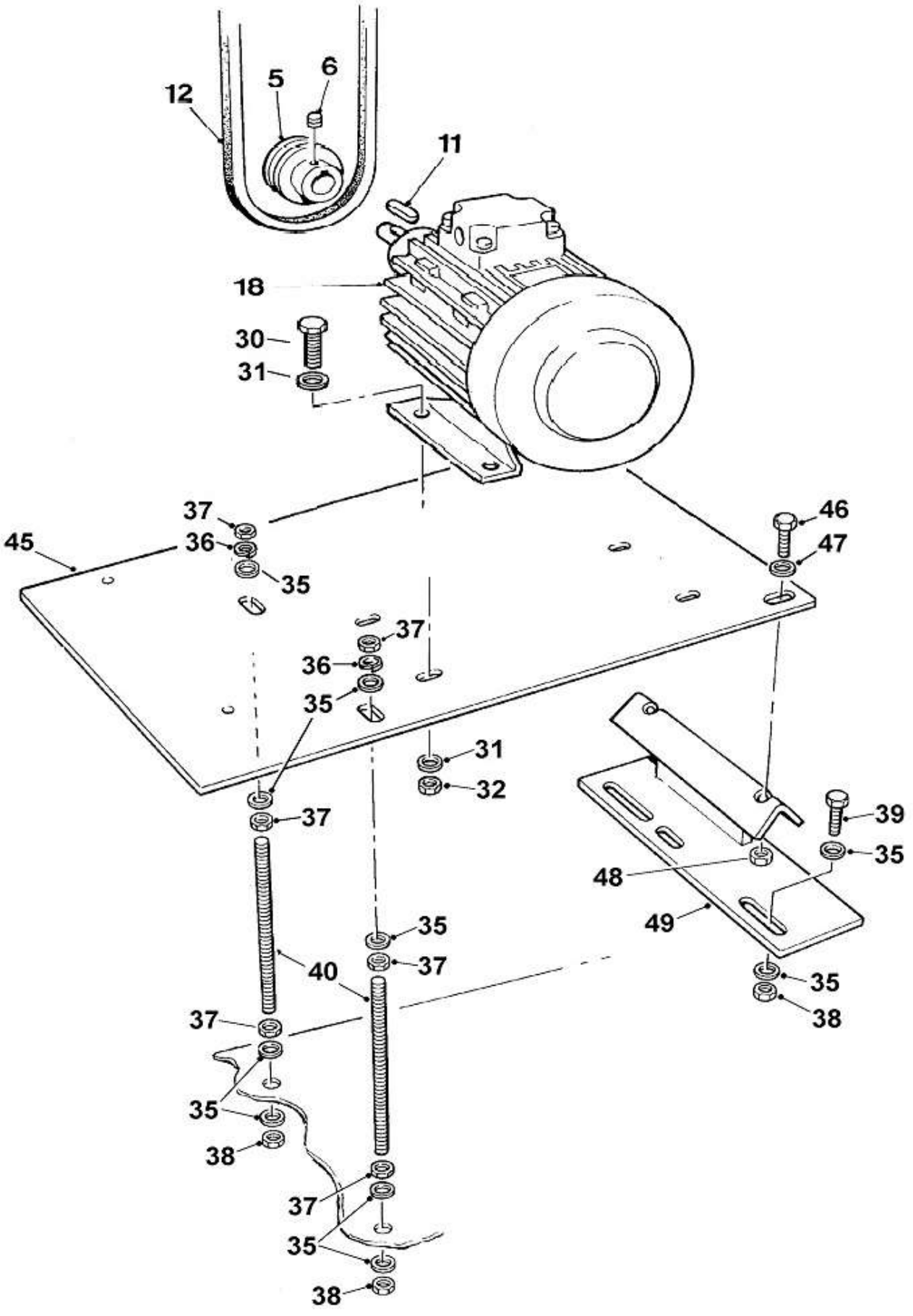


DRUM DRIVE**B - 1C**

Item	Part no	Serial no	Description	Qty
21	513151600		SPROCKET, countershaft, L.H. thread	1
22	513149700		JOURNAL, trunnion	1
23	315803100		PLUG, lubricating	1
24	132352000		CIRCLIP	1
25	88S15D		BEARING	2
26	49S41		O' RING, 79mm I/D	1
29	513150400		BEARING, trunnion	1
30	49S42		O' RING, 75.5mm I/D	1
31	513153100		BEARING	1
32	300204140		KEY, gib head	2
33	513151700		COUNTERSHAFT, L.H. thread	1
34	88S05D		BEARING	2
34A	57S04D2		SCREW, grub	1
35	134105056		CHAIN, 100T	1
35	134105060		CHAIN, 150T & 175T	1
35A	134105002		LINK, connecting	
35B	134105001		LINK, half	AR
43	513150300		SPROCKET, bevel pinion shaft	1
44	513298900		PLATE, adjusting	1
45	513152500		SHAFT, bevel pinion, 100T	1
45	513158700		SHAFT, bevel pinion, 150T & 175T	1
46	513149800		HOUSING, pinion shaft, 100T	1
46	513160700		HOUSING, pinion shaft, 150T & 175T	1
47	513152400		PACKING PIECE (<i>set of 4</i>)	sets 2
48	132362000		CIRCLIP	1
49	513278400		BEVEL PINION	1
50	513211800		GUARD, bevel pinion	1
59	300204140		KEY, gib head	1
60	513211900		WASHER, tab	2
67	513211700		PACKER	1
68	513290700		PULLEY, 'V'	1
71	104S03		NUT	2

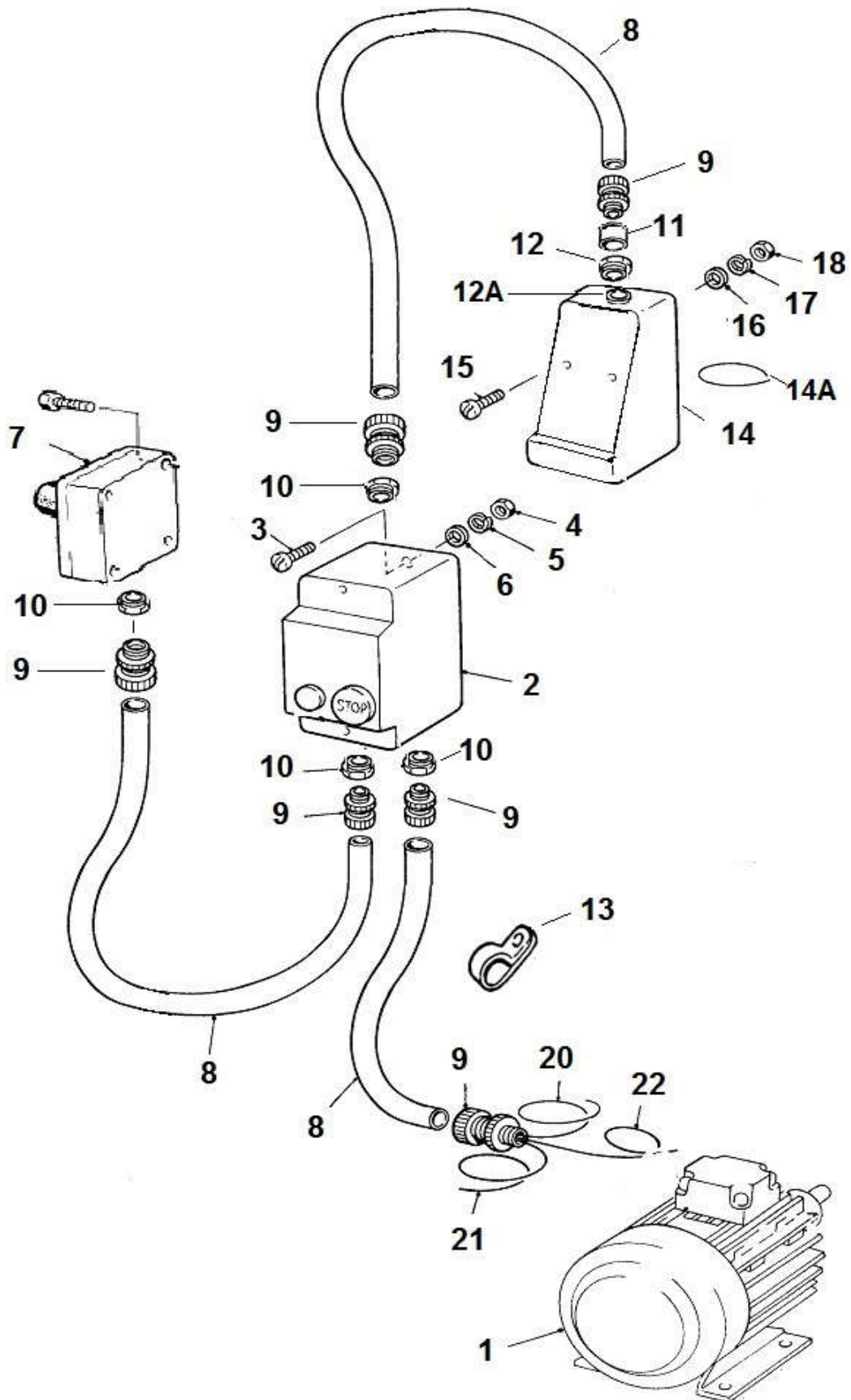
DRUM DRIVE**B - 1C**

Item	Part no	Serial no	Description	Qty
72	41S05		WASHER, spring	2
73	17S05		WASHER, spring, metric	1
79	66S03C		SCREW, set	2
80	66S03D		SCREW, set	2
81	11S04A		SCREW, set, metric	1
82	208S03F		SCREW, c/sunk socket	4
85	10S03		WASHER, flat	2



ELECTRIC 110 volt drive assembly**C - 2**

Item	Part no	Serial no	Description	Qty
5	513290600		PULLEY, 'V' belt	1
6	57S4D2		SCREW, grub	1
11			KEY, parallel, supplied with motor	1
12	397400800		BELT "V" 100T	1
12	397400900		BELT "V" 150T/175T	1
18	202493800		MOTOR, 110V 1.5Kw 2.0Hp	1
20	11S03D		SCREW, set	1
21	267S05		WASHER, flat	2
22	17S04		WASHER, spring	2
23	7S03		NUT	2
30	8S03C		BOLT	4
31	267S05		WASHER, flat	8
32	17S04		WASHER, spring	4
33	7S03		NUT	4
35	267S07		WASHER, flat	12
36	17S06		WASHER, spring	2
37	7S05		NUT	6
38	64S05		NUT, binx self locking	4
39	11S05D		SCREW, set	2
40	513333100		STUD	2
45	513361800		PLATE, motor/engine mounting	1
46	8S04D		BOLT	2
47	V2004220		WASHER, flat, special	2
48	61S04		NUT, binx, self locking	2
49	513358800		BRACKET, support	1



START SWITCHES, electric drive**C - 3**

Item	Part no	Date	Description	Qty
1	202493800		MOTOR, 110V 1.5Kw 2.0Hp	1
2	208398900		CONTACTOR, Schneider 110v	1
.....	208398500		CASE, starter	1
.....	192928000		CONTACTOR	1
.....	207818004		RELAY, overload, 12-18 amp	1
3	11S01A		SCREW, set	2
4	7S01		NUT	2
5	17S02		WASHER, spring	2
6	267S03		WASHER, flat	2
7	208890000		SWITCH, stop, emergency push button	1
8	CR229109		CONDUIT, flexible, 20mm	2mt
8A	V2006398		TIE, cable, panel mount	3
8B	V2003253		TIE, cable,	1
9	CR229110		COUPLING, conduit 20mm	6
10	CR229114		RING, lock, 20mm	4
11	CR229112		COUPLER, female, galvanised, 20mm	1
12	205609700		INSERT, brass	1
12A	49S44		"O" RING, brass insert	1
13	V2003558		"P" clip	1
14	208400000		INLET, surface mount, 110V 16amp	1
14A	49S43		"O" RING, appliance inlet body	1
15	11S02B		SCREW, set	4
16	267S04		WASHER, flat	4
17	17S03		WASHER, spring	4
18	7S02		NUT	4
20	144700100		WIRE, live, brown	3.0m
21	144700300		WIRE, neutral, blue	1.0m
22	144700200		WIRE, earth, green/yellow	2.5m

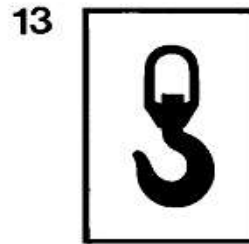
D - 1

100T, 150T & 175T Mixers

2 **WINGET** WINGET LIMITED
PO Box 100, Church Lane, Broom's Barn, Bletchley, MK45 1JH
Tel: 01295 253500 Fax: 01295 253500

Model _____
Serial No. _____
Engine No. _____
Capacity _____ Mass (kg) _____
SRO No. _____ Power (kW) _____
Year Of Manuf. _____ Eng. (rpm) _____ Drum (rpm) _____

A Seaman Group Company



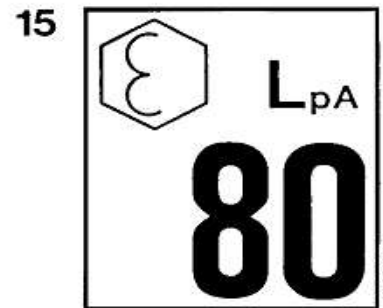
3 **DANGER**
KEEP ENGINE HOUSING
LID CLOSED WHEN
ENGINE IS RUNNING



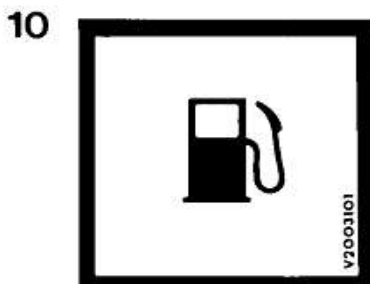
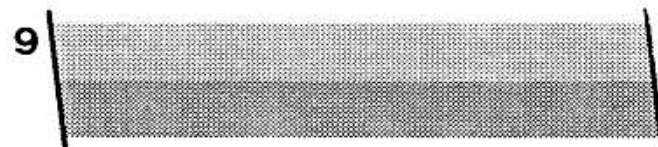
4 **SAFETY WARNING**

- 1 Before starting this machine, the operator should be familiar with the operating instructions issued by the manufacturer.
- 2 The manufacturer's rated capacity must never be exceeded.
- 3 Before carrying out any maintenance, servicing, or greasing, always ensure that the engine has been switched off. Never work on a machine while it is running.

W504694600



8 **WINGET**



DECALS & PLATES**D - 1**


Item	Part no	Serial no	Description	Qty
				1
2	V2003037		PLATE, serial	1
—	101S05B		RIVET, pop	4
3	504600900		DECAL, "Engine housing lid closed"	1
4	504694600		DECAL, "Safety Warning"	1
8	V2003039		DECAL, "WINGET" logo,	3
9	V2003038		DECAL, stripe, 2 colour	AR
10	V2003101		DECAL, "Diesel fuel"	1
13	V2003665		DECAL, "Sling point"	1
14	V2003598		DECAL, "British made"	1
15	V2004130		DECAL, "LPA 80"	1
17	V2004307		DECAL, "Electrical hazard"	1
18	V2005208		DECAL, "Engine starting procedure"	1

1 **100 T**



2 **150 T**

3 **175 T**

4

	BATTERY ISOLATOR ISOLATING THE BATTERY WITH THE ENGINE RUNNING EXCEPT IN CASES OF EMERGENCY WILL LEAD TO DAMAGE TO THE VEHICLE ELECTRICAL SYSTEM.
---	---

5

	
--	--



6

	
---	---


7

	
---	---

8

	
---	---

9

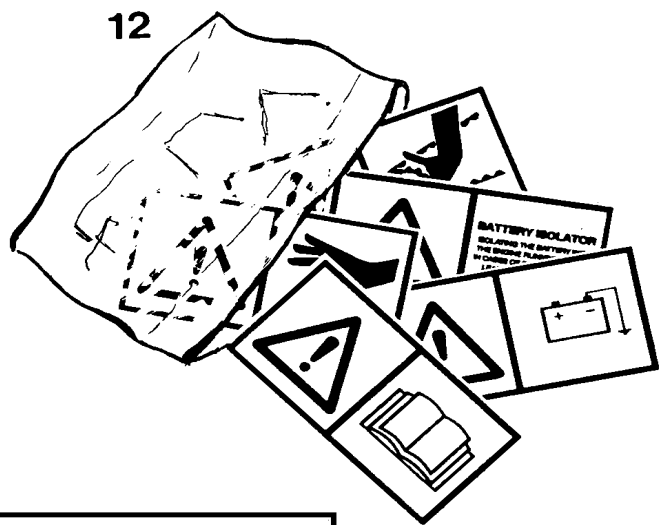
	WHEN MACHINE UNATTENDED REMOVE STARTING HANDLE TO PREVENT UNAUTHORISED USE.
---	--

10

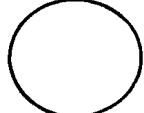
	
--	---

11


	ENGINE STOP UNDER ENGINE COVER.
--	--



13

OFF	ON
	
START	

14

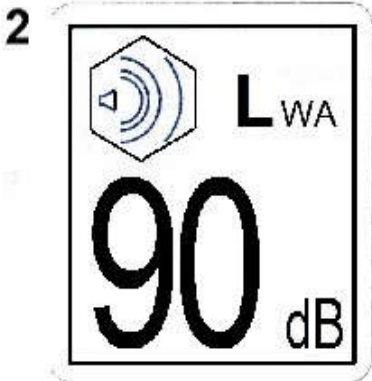
	DO NOT DISCONNECT THE BATTERY OR ALTERNATOR WHEN ENGINE IS RUNNING.
---	--

15

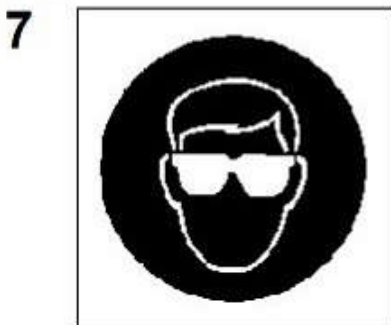
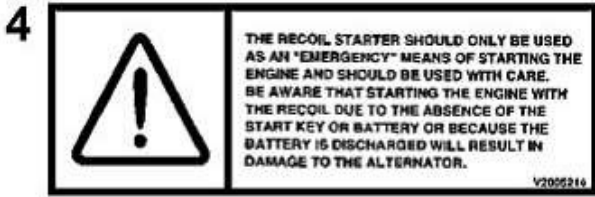
CE

DECALS & PLATES**D - 2**

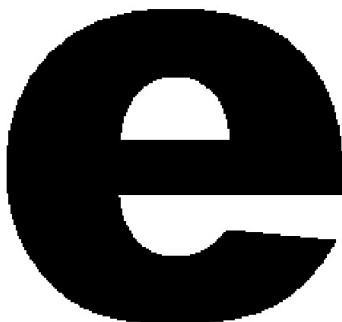
Item	Part no	Serial no	Description	Qty
1	V2003105		DECAL, "100T", Black	2
2	V2003106		DECAL, "150T" Black	2
3	V2003107		DECAL, "175T" Black	2
4	V2004227		DECAL, "Battery isolator"	1
5	V2004229		DECAL, "Operators handbook	1
6	V2004235		DECAL, "Negative earth"	1
7	V2004282		DECAL, "Hot surface"	1
8	V2004281		DECAL, "Chain drive	1
9	V2004288		DECAL, "Remove start handle"	1
10	V2004289		DECAL, "Keep hands clear of drum"	1
11	V2004302		DECAL, Engine stop"	1
12	V601906		KIT, decals, 100T, 150T, 175T Each kit contains all of the decals required for one machine.	1
13	V2005218		DECAL "Key switch"	1
14	V2004796		DECAL "Do not disconnect battery"	1
15	V2004223		DECAL "CE mark"	1



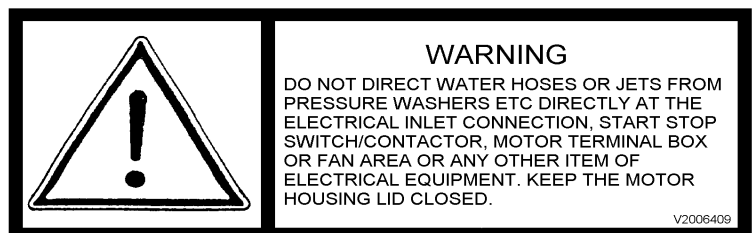
8



11



12



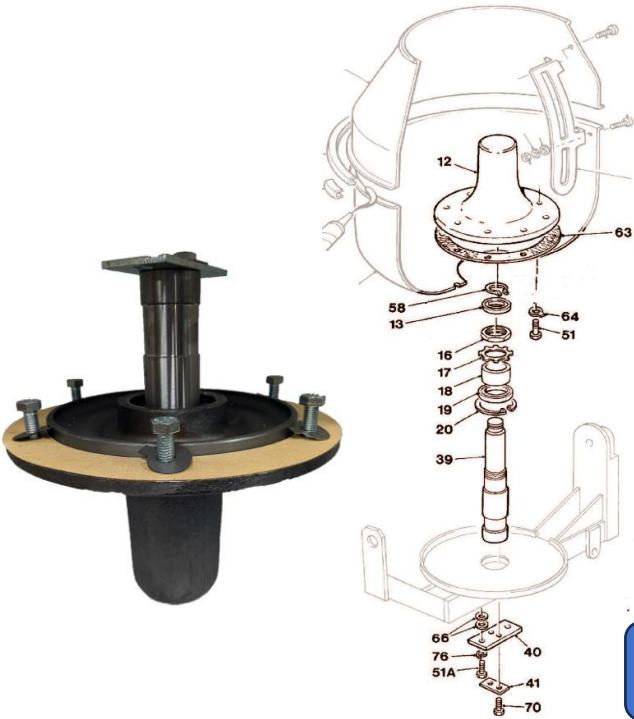
DECALS & PLATES**D - 2A**

Item	Part no	Serial no	Description	Qty
2	V2006408		DECAL, "LWA 90"	1
4	V2005214		DECAL, "The recoil starter"	1
5	FSE357		DECAL, "Engine stop	1
6	V2005630		DECAL, "Locking Plunger"	1
7	V2004744		DECAL, " Eye Protection"	1
8	513371100		DECAL, "Emergency stop"	1
11	V2006408		DECAL "e"	2
12	V2006409		DECAL "Warning Do Not"	1



Mixer Service Assemblies

To save your workshop time and money, we are pleased to offer the below sub-assemblies, all built & tested on our production line in Bolton, UK. Simply make a note of the part number you need and click [here](#) to enquire.



Drum Centre Assembly Precision machined "Top Hat" casting with fully dressed shaft. Supplied with new gasket and all necessary fixings & fasteners. Simply remove old assembly and fix in-place.

Supplied with Drive Gear, please quote **V603699**.
Without Gear, please quote **V603699A**



Enquire Now

Drum Assemblies* : Choose from either a clipped & welded drum & blade set or opt for a quick fix with a complete, new drum & drum drive assembly.

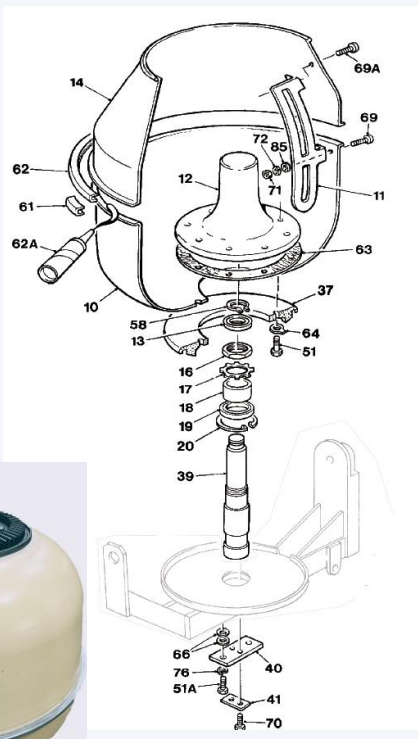


Drum & Blade Set :

- 100T **V603961**
- 150T **V603962**
- 175T **V603963**

Complete drum with centre hub, shaft and gear :

- 100T - **V603696**
- 150T - **V603953**
- 175T - **V603948**



* Supplied in primer as standard. Gloss finish available if required.

To save you time and money, we are pleased to offer the below sub-assemblies, all built & tested on our production line in Bolton, UK. Simply make a note of the part number you need and click [here](#) to enquire.



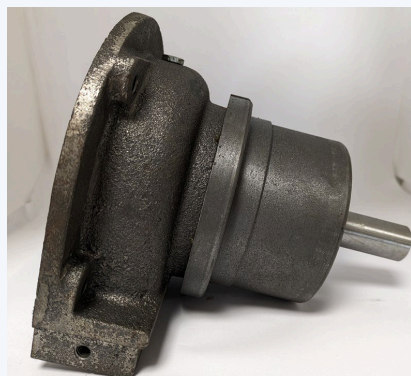
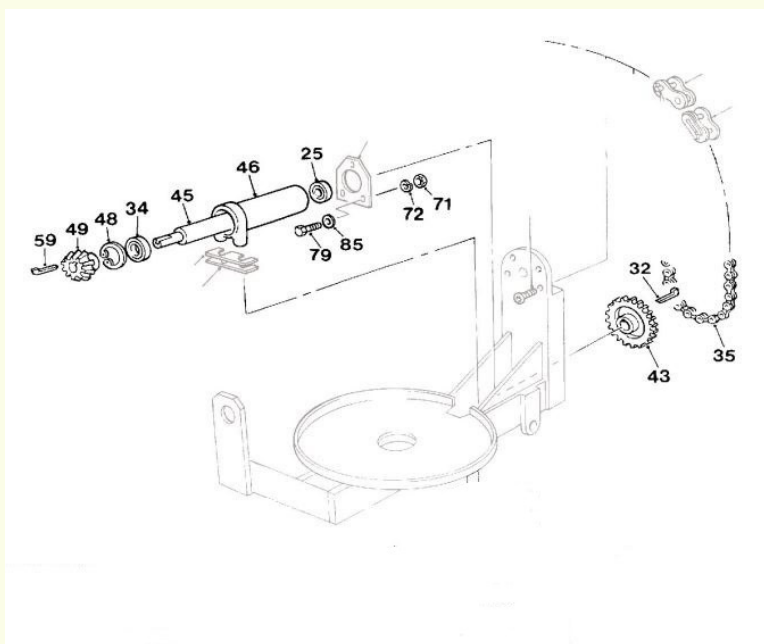
Drum Drive Assembly

(Lower) New drive pinion with fully dressed shaft, cast housing, sprocket & chain.

Please quote following part numbers :

100T – **V603698**

150T & 175T – **V603955**



Enquire Now

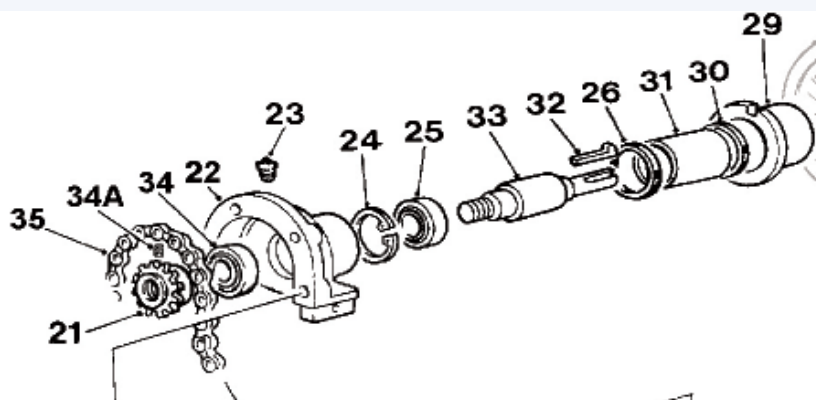
Top Drive Assembly

Complete Countershaft, journal casting, sprocket & chain.

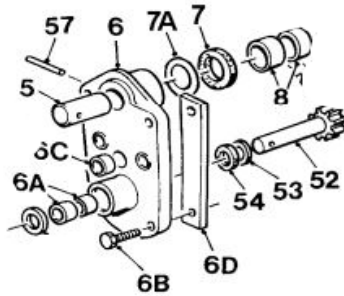
Please quote following part numbers :

100T – **V603697**

150T & 175T – **V603956**



To save you time and money, we are pleased to offer the below sub-assemblies, all built & tested on our production line in Bolton, UK. Simply make a note of the part number you need and click [here](#) to enquire.



Tilting Pinion Assembly for Handwheel Complete castings assembly with pinion, stub pin and all bushes and bearings (fully lubricated).

Please quote **V603957**. Suitable for all 100T, 150T & 175T Mixers

Enquire Now