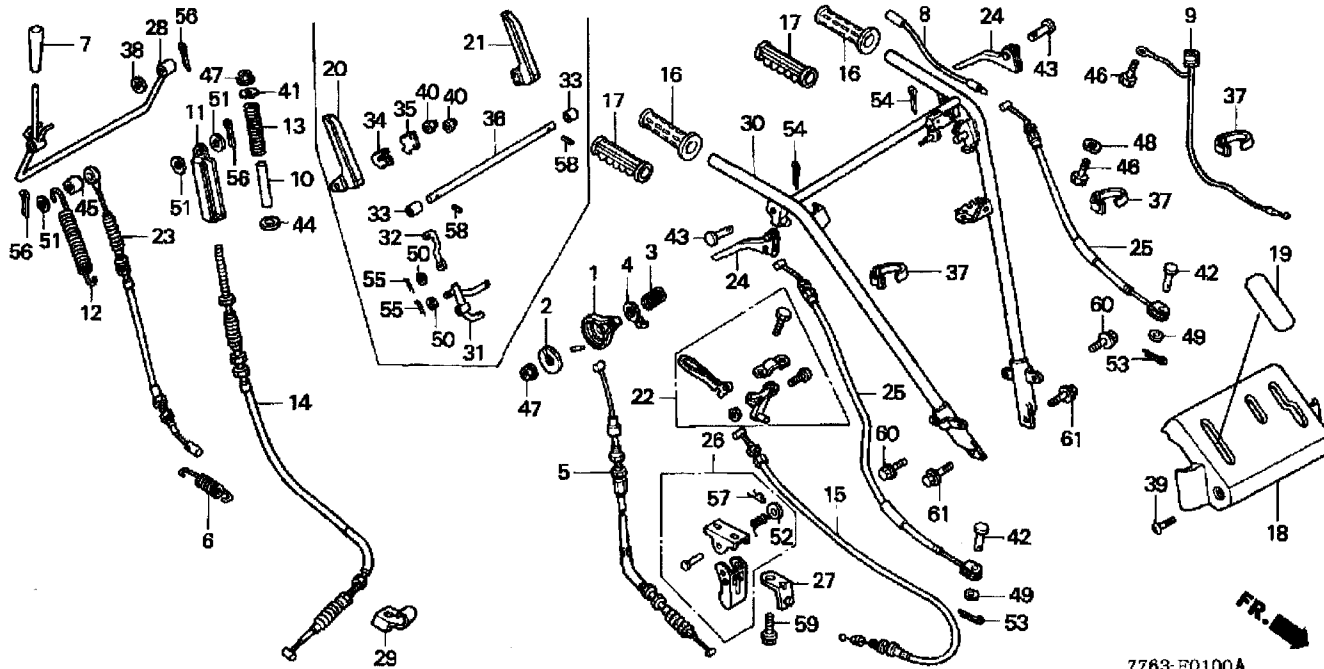


C1

HANDLE PIPE



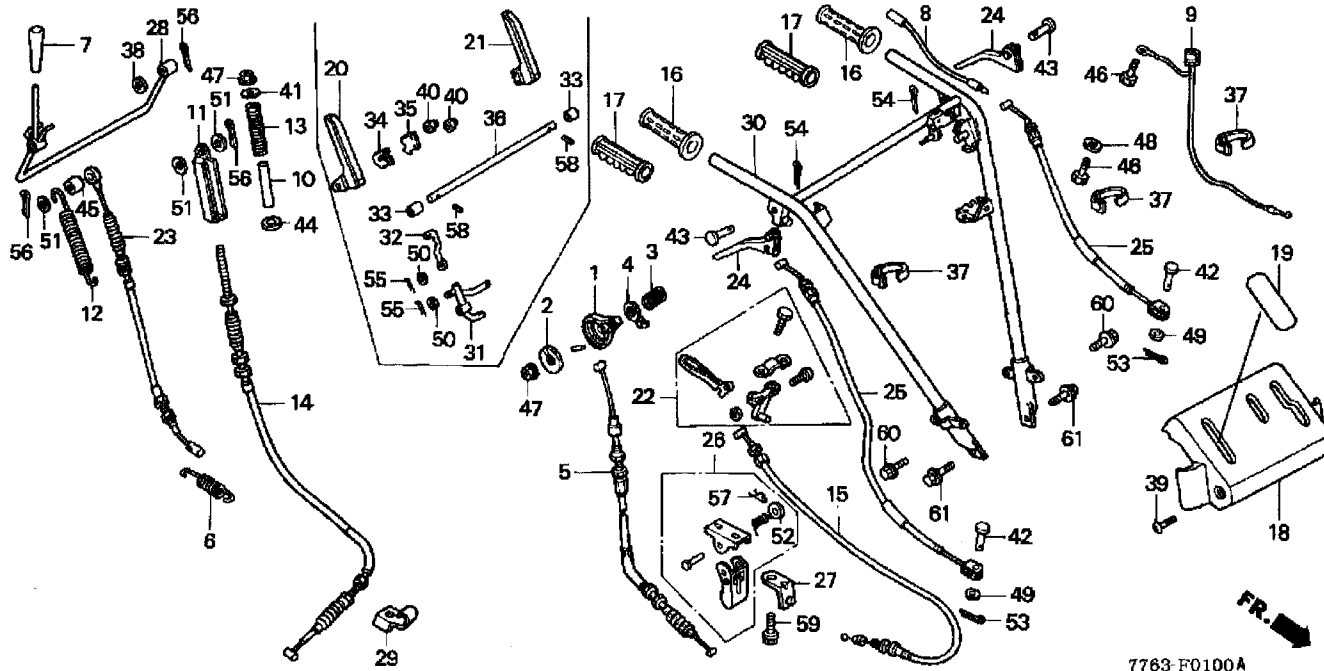
7763-F0100A

SERVICE ITEM	F.R.T
LEVER, THROTTLE	0,1
CABLE, THROTTLE	0,2
SWITCH, ENGINE STOP	0,2
SPRING, CLUTCH RETURN	0,1
SPRING, BRAKE LOAD SETTING	0,3
CABLE, BRAKE	0,3
CABLE, CARRIER LOCK	0,3
GRIP, HANDLE :LEFT	0,1
GRIP, HANDLE :RIGHT	0,1
PANEL, CONTROL	0,2
LEVER, CLUTCH :RIGHT	0,1
LEVER, CLUTCH :LEFT	0,1
LEVER, CARRIER LOCK	0,1
CABLE, LEVER CLUTCH	0,2
LEVER, SIDE CLUTCH :LEFT	0,1
LEVER, SIDE CLUTCH :RIGHT	0,1
CABLE, SIDE CLUTCH :LEFT	0,5
.Replace right side clutch cable add	0,2
CABLE, SIDE CLUTCH :RIGHT	0,5
.Replace left side clutch cable add	0,2
LOCK, CARRIER	0,2
LEVER, CLUTCH	0,2
SHAFT, CLUTCH LEVER	0,3

REF. N°	PART N°	DESCRIPTION	HP 500 HK1	FRAME N° FROM TO
1	17851-767-000	LEVER, THROTTLE	1	
2	17857-VA4-000	PLATE, THROTTLE LEVER	1	
3	17858-VA4-000	SPRING, THROTTLE LEVER	1	
4	17859-VA4-000	SEAT, SPRING	1	
5	17910-776-000	CABLE COMP., THROTTLE	1	
6	22531-727-640	SPRING, BELT TENSIONER	1	
8	36101-760-K20	CORD, ENGINE STOP	1	
9	36110-742-003	SWITCH ASSY., ENGINE STOP	1	
10	46535-740-000	COLLAR, BRAKE SPRING	1	
11	47252-740-000	HOLDER, BRAKE SPRING	1	
12	47255-740-000	SPRING, BRAKE RETURN	1	
13	47273-740-000	SPRING, BRAKE LOAD SETTING	1	
14	47274-742-013	CABLE COMP., BRAKE	1	
15	52510-742-701	CABLE COMP., CARRIER LOCK	1	
17	53321-708-000	GRIP, HANDLE	2	
18	54221-767-A10ZA	PANEL, CONTROL, *NH296*,ALPS GRAY	1	
19	54231-776-640	COVER, CONTROL PANEL	1	
20	54415-776-630	LEVER COMP., R. CLUTCH	1	
21	54416-776-630	LEVER COMP., L. CLUTCH	1	
22	54420-740-003	LEVER, CARRIER LOCK	1	
23	54510-776-000	CABLE COMP., CLUTCH	1	
24	54611-740-010	LEVER, SIDE CLUTCH	2	
25	54720-776-630	CABLE COMP., SIDE CLUTCH	2	
26	63510-742-701	LOCK ASSY., CARRIER	1	
27	63515-742-700	STAY, CABLE	1	

C1

HANDLE PIPE



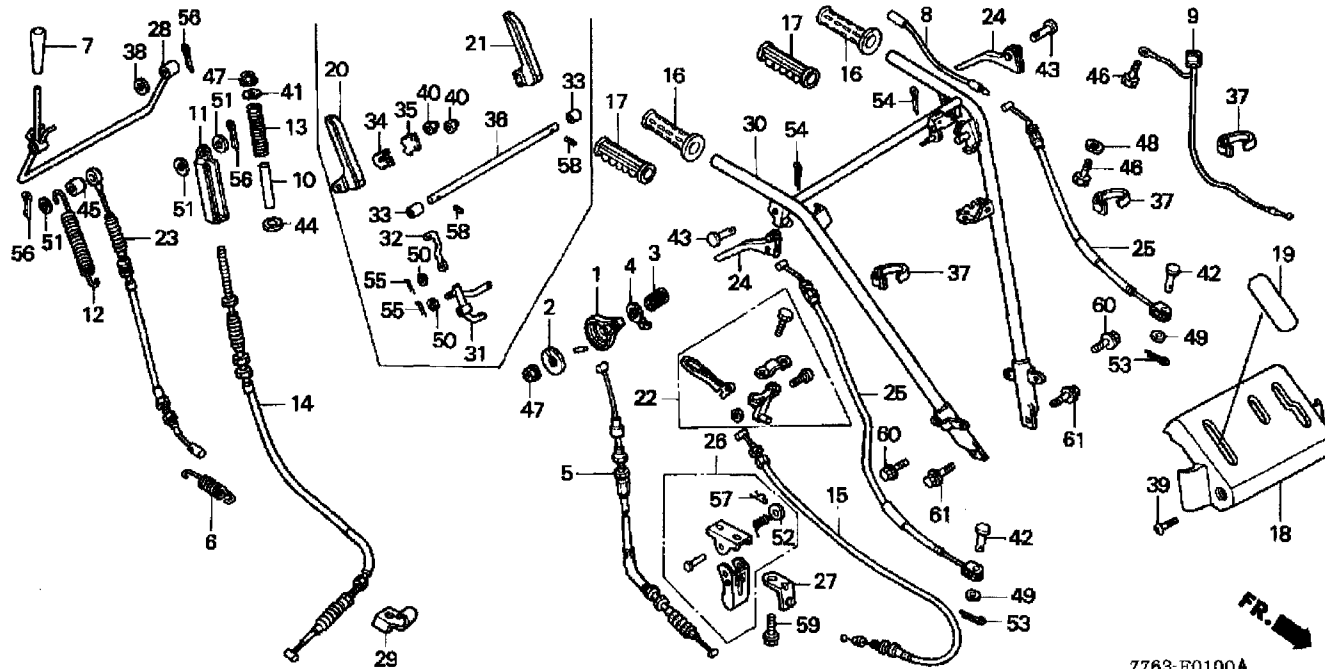
7763-F0100A

SERVICE ITEM	F.R.T

REF. N°	PART N°	DESCRIPTION	HP 500 HK1	FRAME N° FROM TO
29	80034-776-003	HOLDER, BRAKE CABLE	1	
29	80034-776-004	HOLDER, BRAKE CABLE	1	
30	80037-776-003	HANDLE COMP.	1	
30	80037-776-004	HANDLE COMP.	1	
31	80038-776-003	JOINT, CLUTCH LEVER	1	
31	80038-776-004	JOINT, CLUTCH LEVER	1	
32	80039-776-003	ROD, CLUTCH	1	
32	80039-776-004	ROD, CLUTCH	1	
33	80040-776-003	BUSH, CLUTCH LEVER	2	
33	80040-776-004	BUSH, CLUTCH LEVER	2	
34	80041-776-003	PLATE B, LEVER	2	
34	80041-776-004	PLATE B, LEVER	2	
35	80042-776-003	PLATE A, LEVER	2	
35	80042-776-004	PLATE A, LEVER	2	
36	80043-776-003	SHAFT, CLUTCH LEVER	1	
36	80043-776-004	SHAFT, CLUTCH LEVER	1	
37	80068-775-003	TIE, CABLE	4	
37	80068-775-004	TIE, CABLE	4	
39	90123-750-000	SCREW, METER VISOR SETTING	2	
39	90123-750-000	SCREW, METER VISOR SETTING	2	2203178
39	90123-V15-000	BOLT, CONTROL PANEL	2	
39	90123-V15-000	BOLT, CONTROL PANEL	2	2203179
40	90201-415-000	NUT, CAP, 6MM	4	
41	90434-SA0-000	WASHER, PLAIN, 6MM	1	
42	90754-740-010	PIN, SIDE CLUTCH ARM	2	

C1

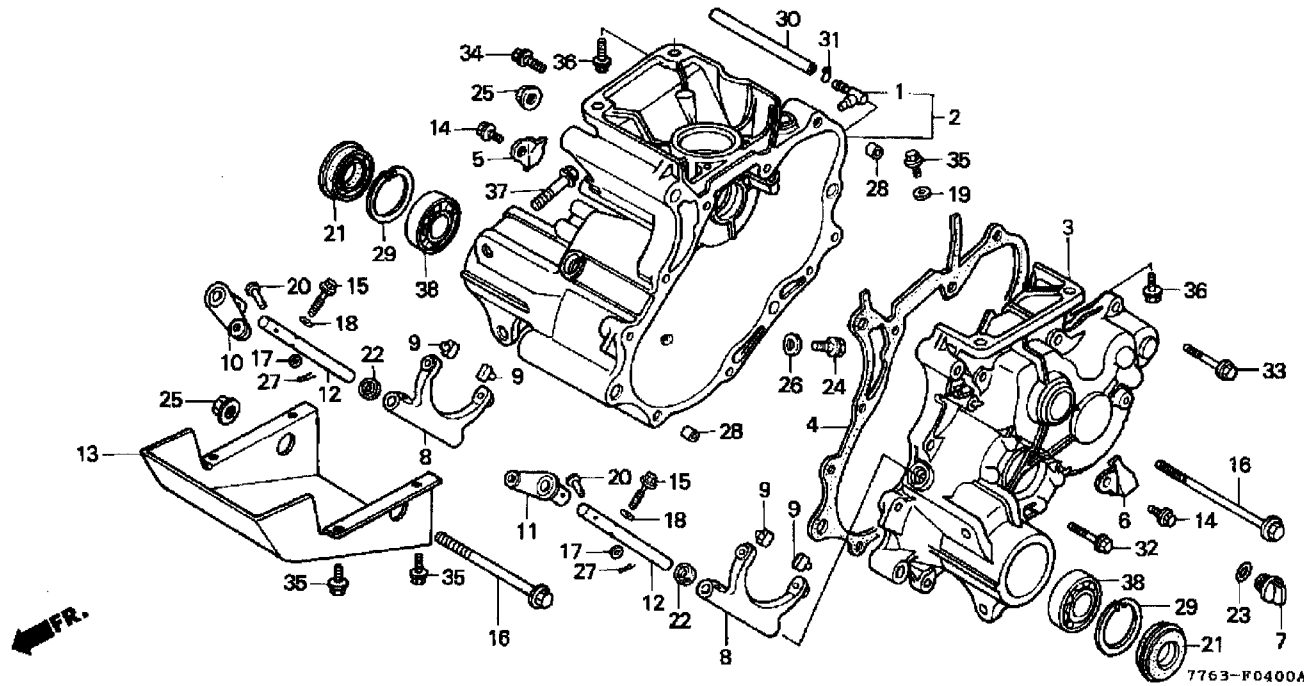
HANDLE PIPE



SERVICE ITEM	F.R.T

7763-F0100A

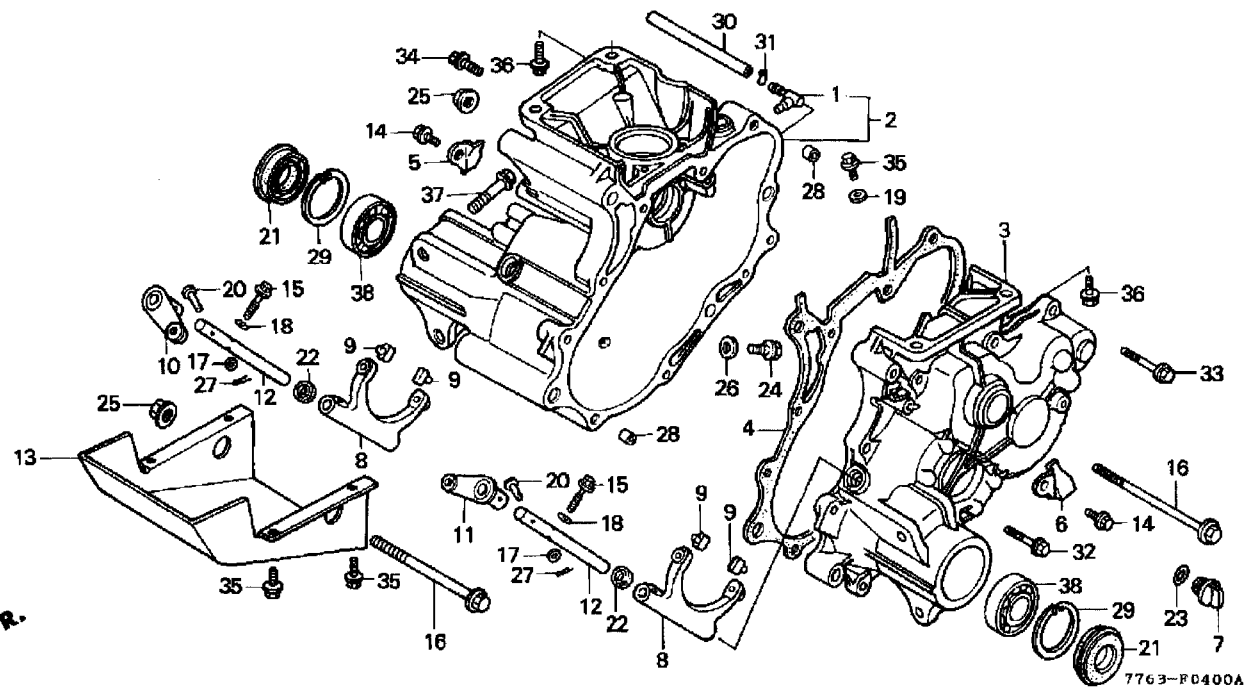
REF. N°	PART N°	DESCRIPTION	HP 500 HK1	FRAME N° FROM TO
43	90755-740-000	PIN, SIDE CLUTCH LEVER	2	
44	91551-732-000	COLLAR, CHANGE JOINT	1	
45	91555-740-000	COLLAR, CLUTCH LEVER	1	
46	92101-05012-0H	BOLT, HEX., 5X12	3	
47	94050-06000	NUT, FLANGE, 6MM	2	
48	94101-05800	WASHER, PLAIN, 5MM	2	
49	94101-06800	WASHER, PLAIN, 6MM	2	
50	94101-08800	WASHER, PLAIN, 8MM	2	
51	94101-10800	WASHER, PLAIN, 10.5X22X1.6	3	
52	94102-10800	WASHER, PLAIN, (10.5X18X1.6)	1	
53	94201-20121	PIN, SPLIT, 2.0	2	
54	94201-20201	PIN, SPLIT, 2.0	2	
55	94201-25151	PIN, SPLIT, 2.5	2	
56	94201-30251	PIN, SPLIT, 3.0	2	
57	94251-10400	PIN, LOCK, 10MM	1	
58	94305-40202	PIN, SPRING, 4X20	2	
59	95701-08016-00	BOLT, FLANGE, 8X16	2	
60	95701-10018-00	BOLT, FLANGE, 10X18	4	
61	95701-10025-00	BOLT, FLANGE, 10X25	2	



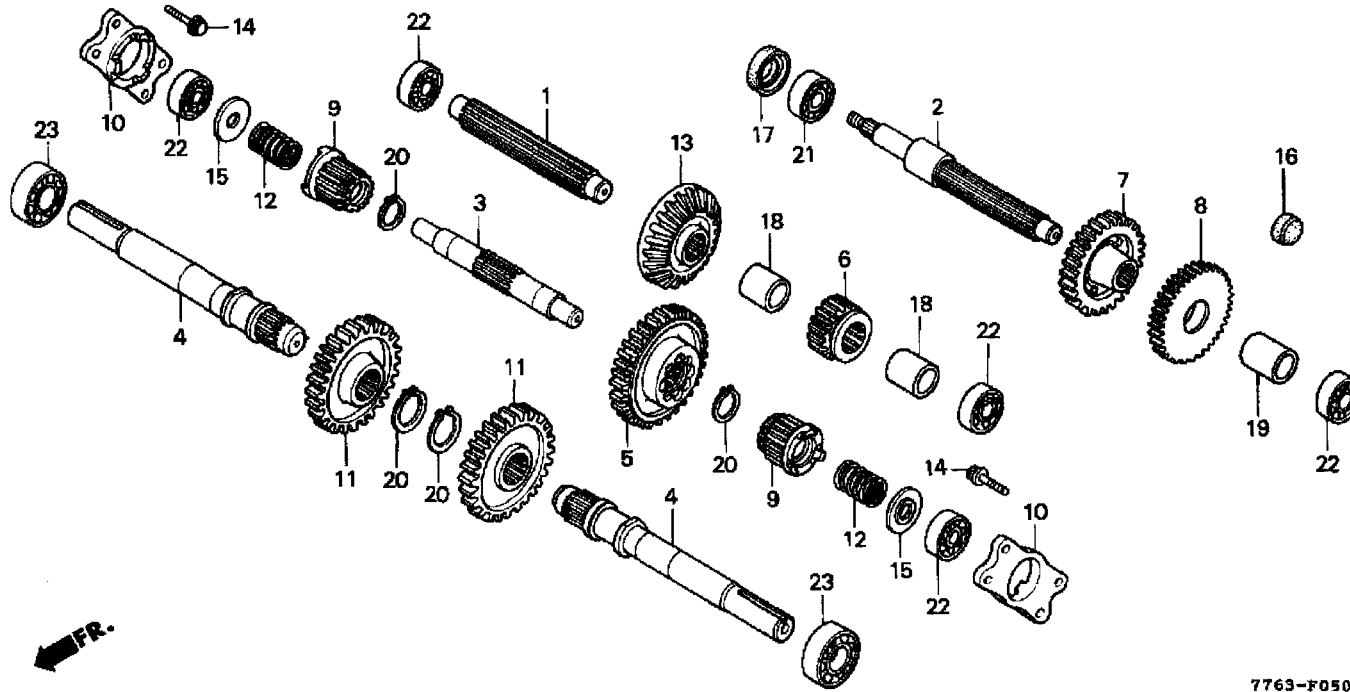
SERVICE ITEM	F.R.T
CASE. TRANSMISSION :RIGHT	3,4
.INCLUDES: Engine removal and installation	
CASE. TRANSMISSION :LEFT	2,8
.INCLUDES: Engine removal and installation	
PACKING. TRANSMISSION CASE	2,3
.INCLUDES: Engine removal and installation	
FORK. SIDE CLUTCH :LEFT	2,6
.INCLUDES: Engine removal and installation	
FORK. SIDE CLUTCH :RIGHT	2,6
.INCLUDES: Engine removal and installation	
ARM. SIDE CLUTCH :RIGHT	1,9
.INCLUDES: Engine removal and installation	
ARM. SIDE CLUTCH :BOTH	2
.INCLUDES: Engine removal and installation	
ARM. SIDE CLUTCH :LEFT	1,9
.INCLUDES: Engine removal and installation	
ARM. SIDE CLUTCH :BOTH	2
.INCLUDES: Engine removal and installation	
PROTECTOR. TRANSMISSION CASE	1,9
.INCLUDES: Engine removal and installation	
WATER SEAL. WHEEL SHAFT :LEFT	0,8
.INCLUDES: Engine removal and installation	
Replace right wheel shaft water seal add	0,3
WATER SEAL. WHEEL SHAFT :RIGHT	0,8
.INCLUDES: Engine removal and installation	
Replace left wheel shaft water seal add	0,3
BEARING. WHEEL SHAFT :LEFT	2,5
.Replace right bearing add	0,2
BEARING. WHEEL SHAFT :RIGHT	2,5

REF. N°	PART N°	DESCRIPTION	HP	FRAME N°
			500	FROM TO
			HK1	
1	11106-GM2-300	JOINT, BREATHER	1	
2	21111-766-000	CASE, R. TRANSMISSION	1	
3	21210-766-000	CASE COMP., L. TRANSMISSION	1	
4	21281-740-020	PACKING, TRANSMISSION CASE	1	
5	21913-740-000	PLATE, R. SIDE CLUTCH	1	
6	21914-740-000	PLATE, L. SIDE CLUTCH	1	
7	25611-733-000	CAP, OIL	1	
8	40111-740-000	FORK, SIDE CLUTCH	2	
9	40112-740-003	PIN, FORK	4	
10	40310-740-010	ARM COMP., R. SIDE CLUTCH	1	
11	40320-740-010	ARM COMP., L. SIDE CLUTCH	1	
12	40331-740-000	SHAFT, SIDE CLUTCH ARM	2	
13	80019-776-003	GUARD COMP., UNDER	1	
13	80019-776-004	GUARD COMP., UNDER	1	
14	90013-883-000	BOLT, FLANGE, 6X12 (CT200)	2	
15	90028-634-000	BOLT, SPECIAL, 6X21	2	
16	90057-671-000	BOLT, ALTERNATOR	3	
17	90401-752-003	WASHER, 10MM	2	
18	90411-744-000	WASHER, CONICAL SPRING, 6MM	2	
19	90429-PD1-000	WASHER, SEALING, 8MM	1	
20	90752-735-000	PIN, AUXILIARY CHANGE LEVER	2	
21	91206-733-024	WATER SEAL, 25X52X9.5 (NOK)	2	
22	91251-740-003	OIL SEAL (12X18X4.2)	2	
23	91303-800-000	O-RING, 16MM	1	
24	92800-12000	BOLT, DRAIN PLUG, 12MM	1	

SERVICE ITEM	F.R.T
Replace left bearing add	0,2



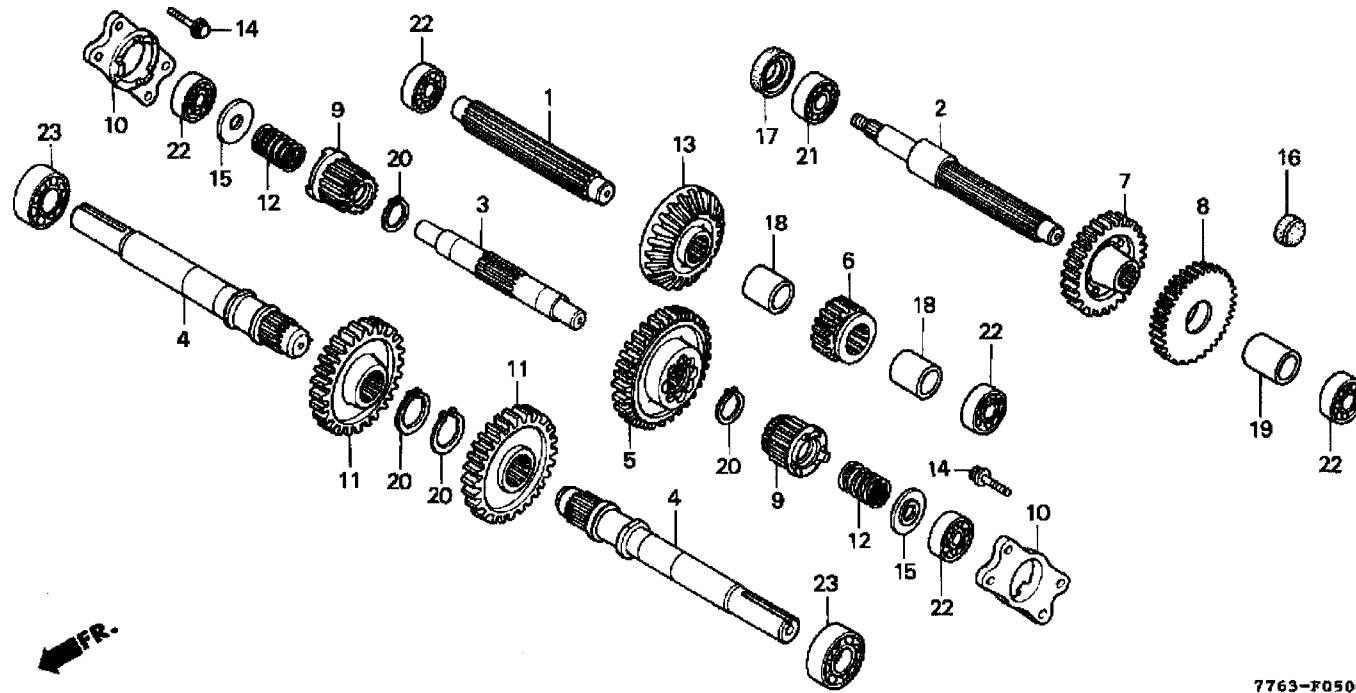
REF. N°	PART N°	DESCRIPTION	HP 500 HK1	FRAME N° FROM	TO
25	94050-10000	NUT, FLANGE, 10MM	3		
26	94109-12000	WASHER, DRAIN PLUG, 12MM	1		
27	94201-20120	PIN, SPLIT, 2.0X12	2		
28	94301-08140	DOWEL PIN, 8X14	2		
29	94520-52000	CIRCLIP, INTERNAL, 52MM	2		
30	95001-45150-40	TUBE, FUEL, 4.5X150,(95001-45001-60M)	1		
31	95002-02080	CLIP, TUBE (B8)	1		
32	95701-06032-00	BOLT, FLANGE, 6X32	5		
33	95701-06040-00	BOLT, FLANGE, 6X40	4		
34	95701-08012-00	BOLT, FLANGE, 8X12	1		
35	95701-08016-00	BOLT, FLANGE, 8X16	5		
36	95701-08030-00	BOLT, FLANGE, 8X30	4		
37	95801-10065-00	BOLT, FLANGE, 10X65	4		
38	96100-62050-00	BEARING, RADIAL BALL, 6205	2		



7763-F0500

SERVICE ITEM	F.R.T
SHAFT. INPUT	2,6
.INCLUDES: Engine removal and installation	
COUNTERSHAFT	2,8
.INCLUDES: Engine removal and installation	
SHAFT. WHEEL :LEFT	2,6
.INCLUDES: Engine removal and installation	
SHAFT. WHEEL :RIGHT	2,6
.INCLUDES: Engine removal and installation	
GEAR. SIDE CLUTCH DRIVE	2,7
.INCLUDES: Engine removal and installation	
GEAR. SIDE CLUTCH :LEFT	2,6
.INCLUDES: Engine removal and installation	
GEAR. SIDE CLUTCH :RIGHT	2,6
.INCLUDES: Engine removal and installation	
CASE. SIDE CLUTCH BEARING :LEFT	2,8
.INCLUDES: Engine removal and installation	
CASE. SIDE CLUTCH BEARING :RIGHT	2,8
.INCLUDES: Engine removal and installation	
GEAR. FINAL :LEFT	2,7
.INCLUDES: Engine removal and installation	
GEAR. FINAL :RIGHT	2,7
.INCLUDES: Engine removal and installation	
GEAR. DRIVEN BEVEL	2,7
.INCLUDES: Engine removal and installation	
BEARING. WHEEL SHAFT :LEFT	2,5
.INCLUDES: Engine removal and installation	
BEARING. WHEEL SHAFT :RIGHT	2,5
.INCLUDES: Engine removal and installation	

REF. N°	PART N°	DESCRIPTION	HP 500 HK1	FRAME N° FROM	TO
1	23112-740-000	SHAFT, INPUT	1		
2	23221-740-000	COUNTERSHAFT	1		
3	23231-740-000	SHAFT, SIDE CLUTCH	1		
4	23371-740-020	SHAFT, WHEEL	2		
5	23407-766-000	GEAR, SIDE CLUTCH DRIVE (49T)	1		
6	23411-740-010	GEAR, INPUT SHAFT CHANGE (19T)	1		2100134
6	23411-776-A40	GEAR, INPUT SHAFT CHANGE (17T)	1		
6	23411-776-A40	GEAR, INPUT SHAFT CHANGE (17T)	1	2100135	
7	23422-740-000	GEAR, COUNTERSHAFT (36T)	1		
8	23431-776-000	GEAR, DRIVEN (42T)	1		2100134
8	23431-776-A40	GEAR, DRIVEN (44T)	1		
8	23431-776-A40	GEAR, DRIVEN (44T)	1	2100135	
9	23511-740-000	GEAR, SIDE CLUTCH (16T)	2		
10	23521-740-000	CASE, SIDE CLUTCH BEARING	2		
11	23581-740-000	GEAR, FINAL (35T)	2		
12	40181-776-000	SPRING, SIDE CLUTCH	2		
13	41141-740-000	GEAR, DRIVEN BEVEL (25T)	1		
14	90030-PC8-000	BOLT, SPECIAL, 8MM	8		
15	90501-740-010	WASHER, CLUTCH SPRING	2		
16	90871-733-003	PLUG, SEALING, 28 (ARAI)	1		
17	91202-740-003	OIL SEAL, 20X31X7 (ARAI)	1		
18	91551-776-000	COLLAR, (22.3X28.5X37.25)	2		
19	91552-776-000	COLLAR, (22.3X28.5X43)	1		
20	94510-25000	CIRCLIP, EXTERNAL, 25MM	4		
21	96100-60040-00	BEARING, RADIAL BALL, 6004	1		

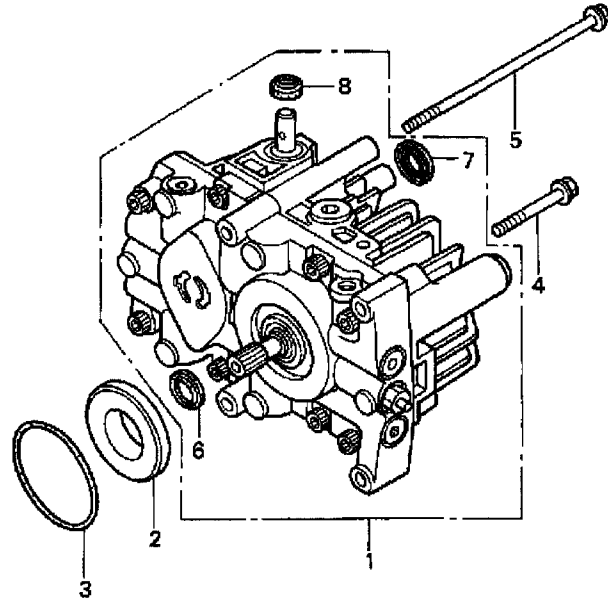


7763-F0500

SERVICE ITEM	F.R.T

REF. N°	PART N°	DESCRIPTION	HP 500 HK1	FRAME N° FROM	TO
---------	---------	-------------	------------------	------------------	----

22	96100-62030-00	BEARING, RADIAL BALL, 6203	5		
23	96100-62050-00	BEARING, RADIAL BALL, 6205	2		



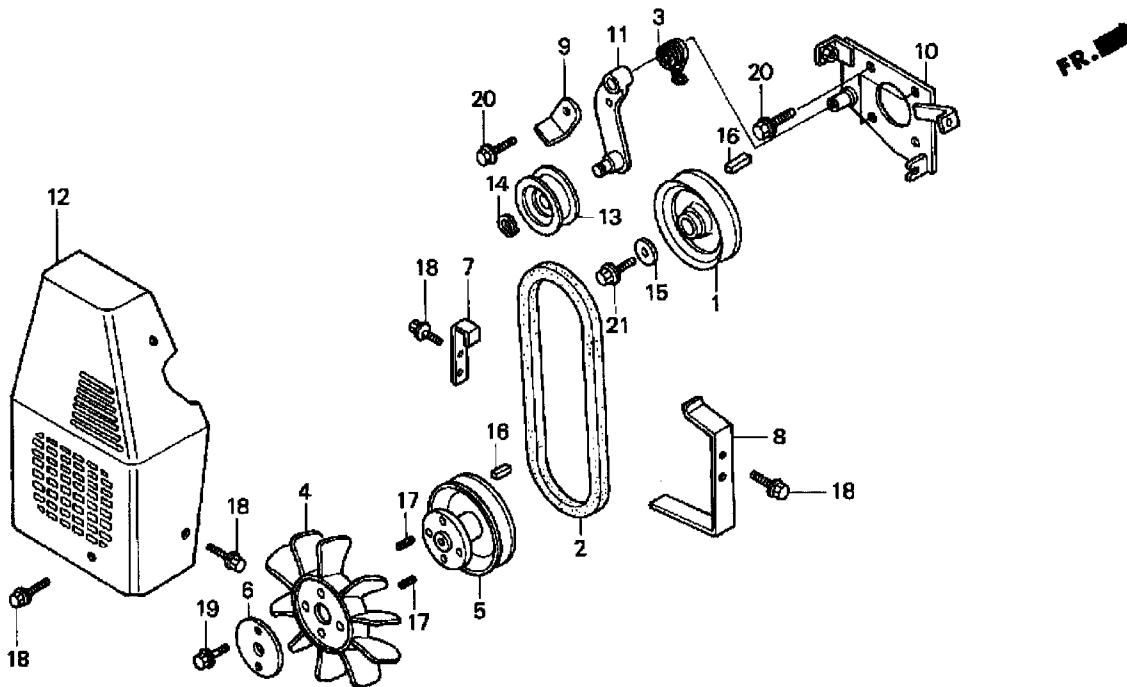
FR.

7753-F0540A

SERVICE ITEM	F.R.T
HYDROSTATIC TRANSMISSION	0,6

REF. N°	PART N°	DESCRIPTION	HP	FRAME N°	
				FROM	TO
1	20005-766-003	H.S.T. ASSY.	1		
2	21178-766-000	BOSS, GUIDE	1		
3	91307-639-000	O-RING, 64X2	1		
4	95701-08045-00	BOLT, FLANGE, 8X45	2		
5	95701-08115-00	BOLT, FLANGE, 8X115	2		
6	91201-766-003	OIL SEAL, 15X24X7	1		
7	91202-766-003	OIL SEAL, 15X35X7	1		
8	91203-766-003	OIL SEAL, 12X25X7	1		

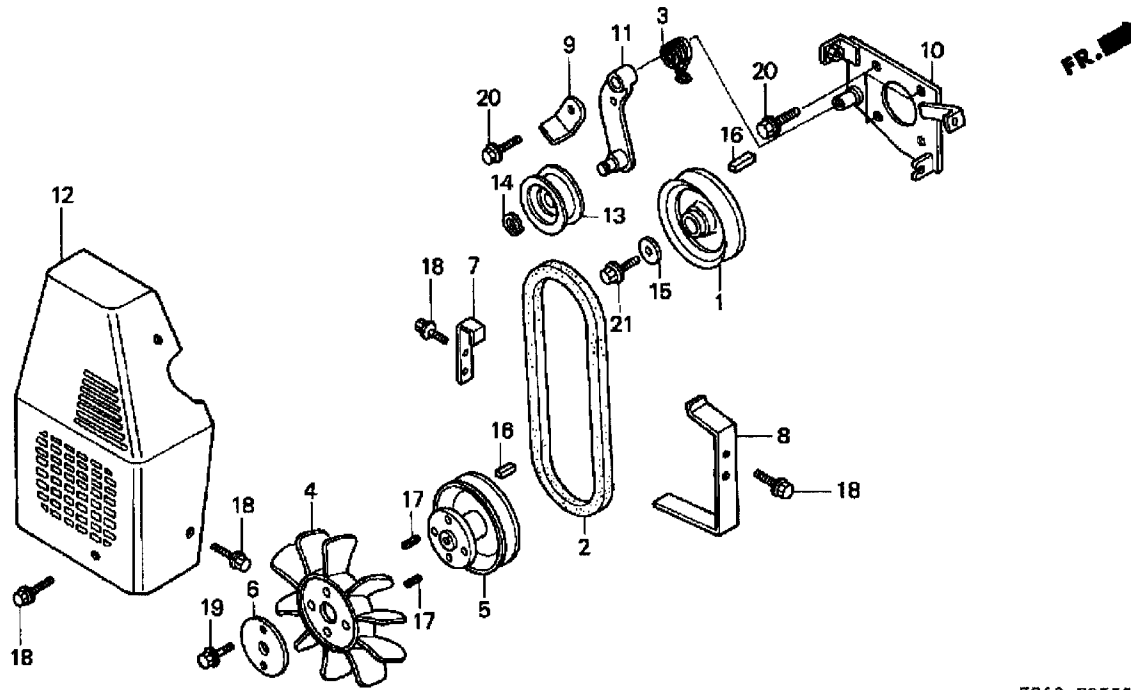




7763-RD550A

SERVICE ITEM	F.R.T
PULLEY, DRIVE	0,2
BELT, TRANSMISSION DRIVE	0,2
FAN, TRANSMISSION COOLING	0,2
PULLEY, TRANSMISSION COOLING FAN	0,2
COVER, BELT	0,1
PULLEY, TENSIONER	0,1

REF. N°	PART N°	DESCRIPTION	HP 500 HK1	FRAME N° FROM TO
1	22411-734-700	PULLEY, DRIVE (80MM)	1	
2	22431-776-003	V-BELT (SB-27)	1	
3	22585-VA8-000	SPRING, CLUTCH RETURN	1	
4	40491-776-003	FAN, TRANSMISSION COOLING	1	
5	80021-776-003	PULLEY COMP., FAN	1	
5	80021-776-004	PULLEY COMP., FAN	1	
6	80022-776-003	WASHER, FAN,	1	
6	80022-776-004	WASHER, FAN,	1	
7	80023-776-003	STOPPER COMP., L. BELT	1	
7	80023-776-004	STOPPER COMP., L. BELT	1	
8	80024-776-003	STOPPER COMP., R. BELT	1	
8	80024-776-004	STOPPER COMP., R. BELT	1	
9	80025-776-003	STOPPER, BELT	1	
9	80025-776-004	STOPPER, BELT	1	
10	80026-776-003	BRACKET COMP., TENSIONER	1	
10	80026-776-004	BRACKET COMP., TENSIONER	1	
11	80027-776-003	ARM COMP., TENSION CLUTCH	1	
11	80027-776-004	ARM COMP., TENSION CLUTCH	1	
12	80028-776-003	COVER COMP., BELT	1	
12	80028-776-003	COVER COMP., BELT	1	2203208
12	80028-776-004	COVER COMP., BELT	1	
12	80028-776-013	COVER COMP., BELT	1	
12	80028-776-013	COVER COMP., BELT	1	2203209
13	80059-775-003	PULLEY, TENSIONER	1	
13	80059-775-004	PULLEY, TENSIONER	1	

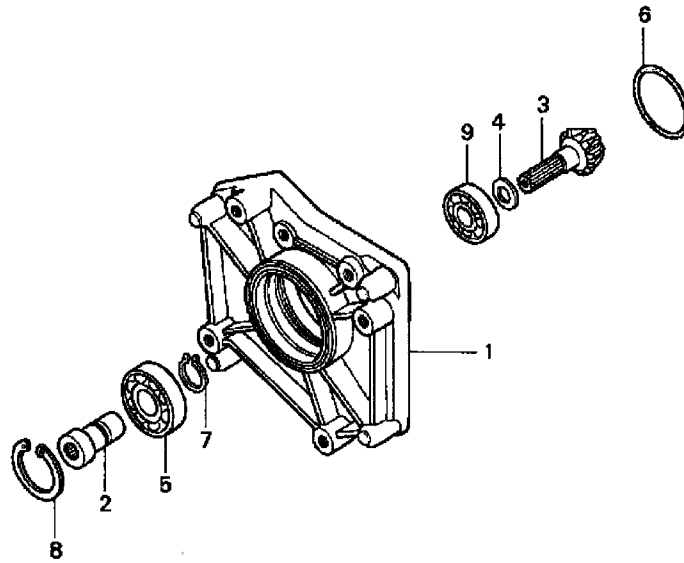


7763-R0550A

SERVICE ITEM	F.R.T

REF. N°	PART N°	DESCRIPTION	HP 500 HK1	FRAME N° FROM TO
14	80085-775-003	CIRCLIP, EXTERNAL, 15MM	1	
14	80085-775-004	CIRCLIP, EXTERNAL, 15MM	1	
15	90473-842-000	WASHER, 8MM	1	
16	90741-732-000	KEY, 5X5X21	2	
17	94305-60162	PIN, SPRING, 6X16	2	
18	95701-06012-00	BOLT, FLANGE, 6X12	9	
19	95701-06020-00	BOLT, FLANGE, 6X20	1	
20	95701-08016-00	BOLT, FLANGE, 8X16	5	
21	95701-08020-00	BOLT, FLANGE, 8X20	1	

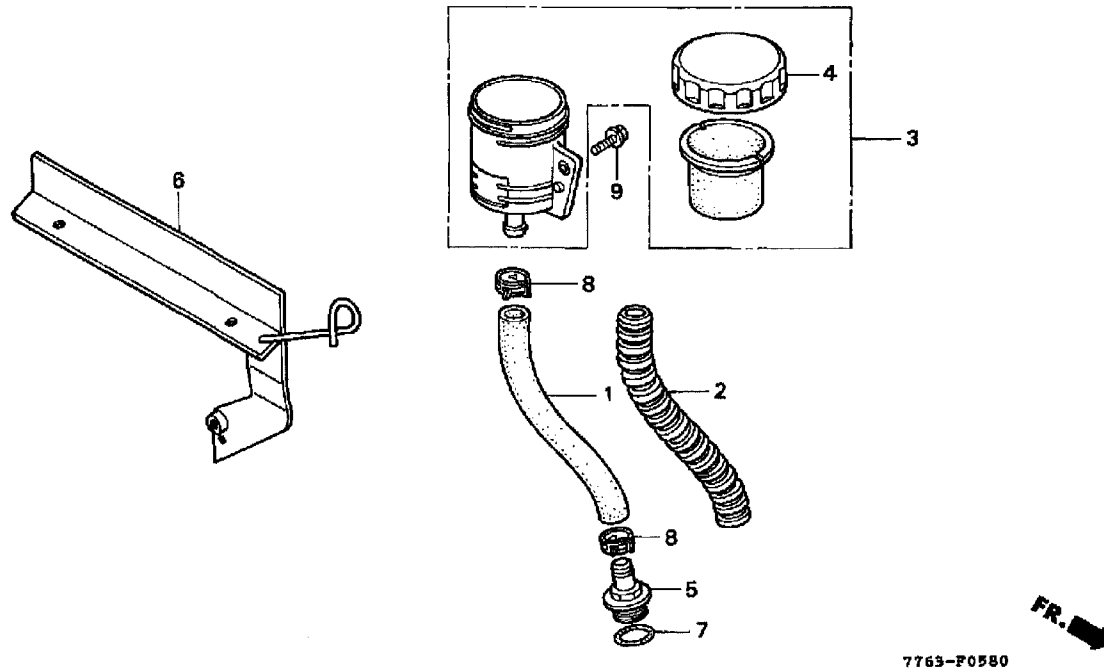
FR. 



7763-F0560

SERVICE ITEM	F.R.T
COVER, BEVEL GEAR	1,7
PINION, DRIVE BEVEL GEAR	1,7
.INCLUDES: Engine removal and installation	

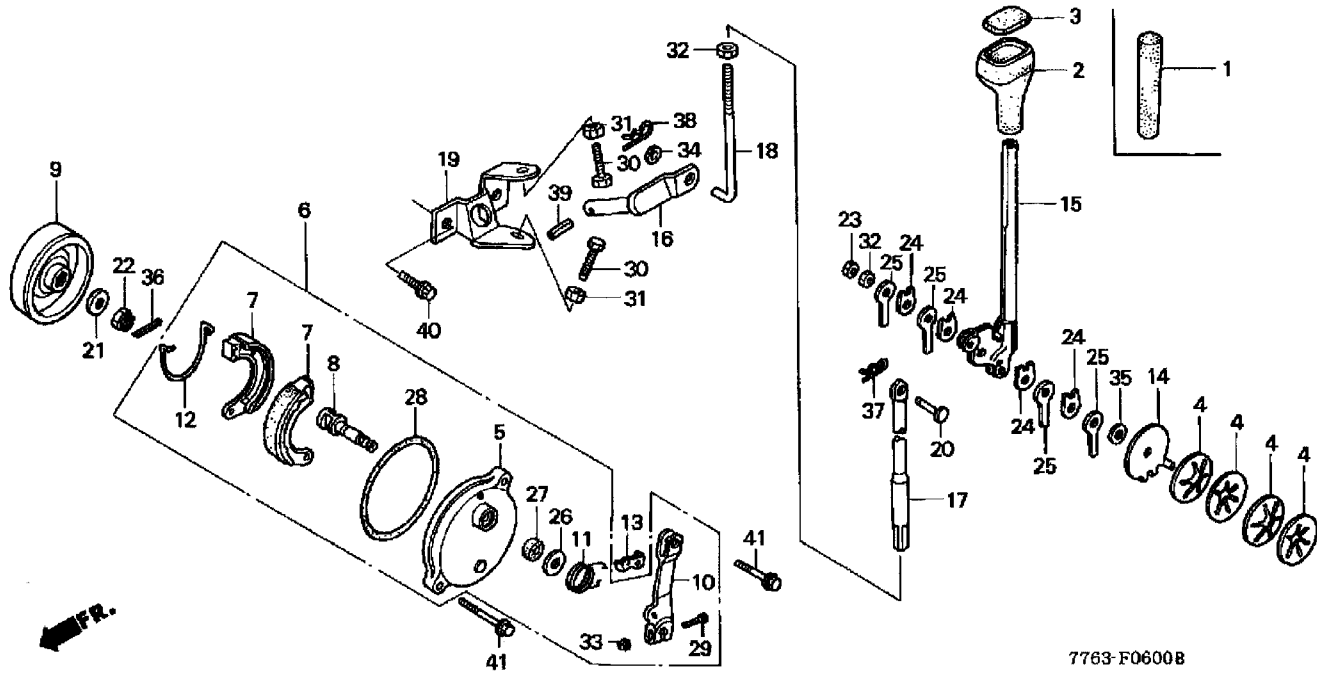
REF. N°	PART N°	DESCRIPTION	HP 500 HK1	FRAME N° FROM	TO
1	21171-766-000	COVER, BEVEL	1		
2	23218-766-000	SHAFT, JOINT	1		
3	41131-766-000	PINION, BEVEL	1		
4	90540-740-000	WASHER, BEVEL GEAR	1		
5	91001-878-003	BEARING, RADIAL BALL, 62/22	1		
6	91301-766-003	O-RING, 42.5X3	1		
7	94510-22000	CIRCLIP, EXTERNAL, 22MM	1		
8	94520-50000	CIRCLIP, INTERNAL, 50MM	1		
9	96100-62030-00	BEARING, RADIAL BALL, 6203	1		



SERVICE ITEM	F.R.T
TUBE, OIL TANK	0,2
TANK, OIL (HYDROSTATIC TRANSMISSION)	0,2

REF. N°	PART N°	DESCRIPTION	HP 500 HK1	FRAME N°	
				FROM	TO
1	15422-776-000	TUBE, OIL	1		
2	15428-767-000	PROTECTOR, OIL TUBE	1		
3	56850-767-000	TANK ASSY., OIL	1		
4	56862-767-300	BODY, OIL CAP	1		
5	56955-766-000	CONNECTOR, SUCTION PORT	1		
6	80002-776-003	BRACKET, OIL TANK	1		
6	80002-776-004	BRACKET, OIL TANK	1		
7	91305-KE1-000	O-RING, 19.4X2.3	1		
8	91462-SA5-950	CLAMP D, 19MM	2		
9	95701-06016-00	BOLT, FLANGE, 6X16	1		

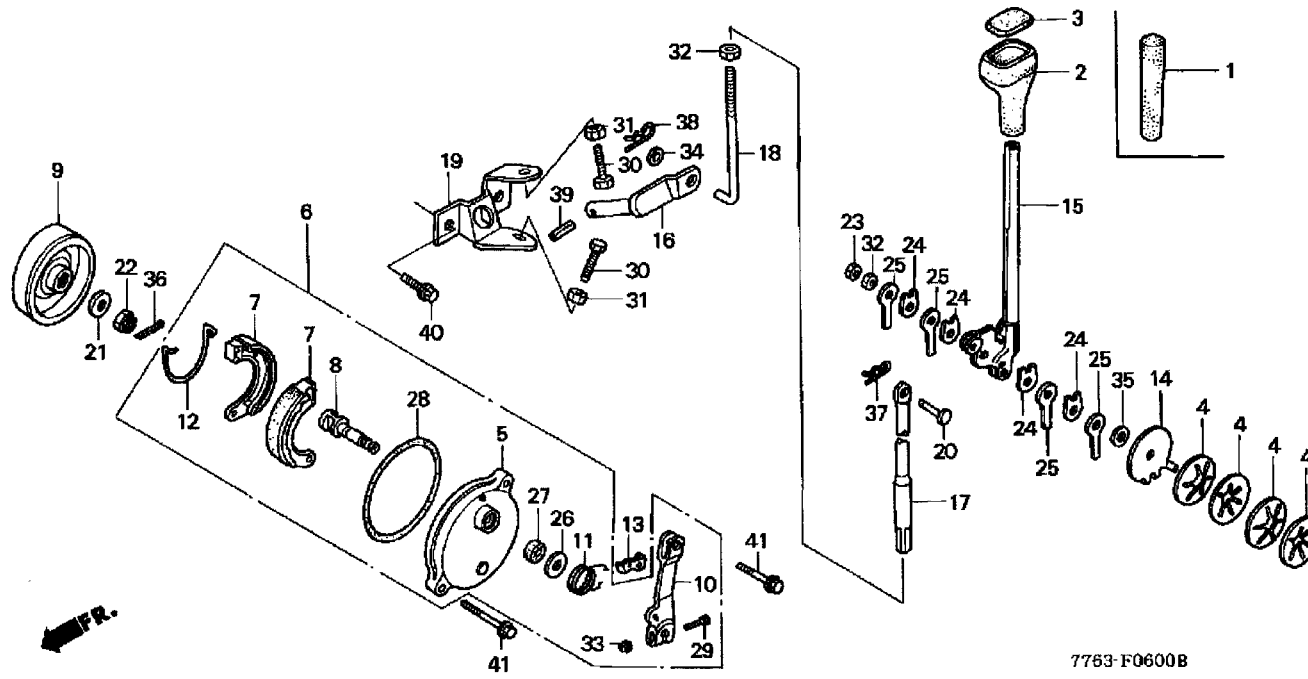
CHANGE LEVER



7763-F0600B

SERVICE ITEM	F.R.T
GRIP. CHANGE LEVER	0,1
PANEL. BRAKE	1,2
.INCLUDES: Engine removal and installation	
PANEL ASSEMBLY. BRAKE	1
.INCLUDES: Engine removal and installation	
SHOE. BRAKE	1,2
.NOTE: Same time for two units	
.INCLUDES: Engine removal and installation	
DRUM. BRAKE	1,3
.INCLUDES: Engine removal and installation	
ARM. BRAKE	0,2
LEVER. CHANGE	0,2
ARM. CHANGE LEVER	0,2
BRACKET. CHANGE ARM	0,2

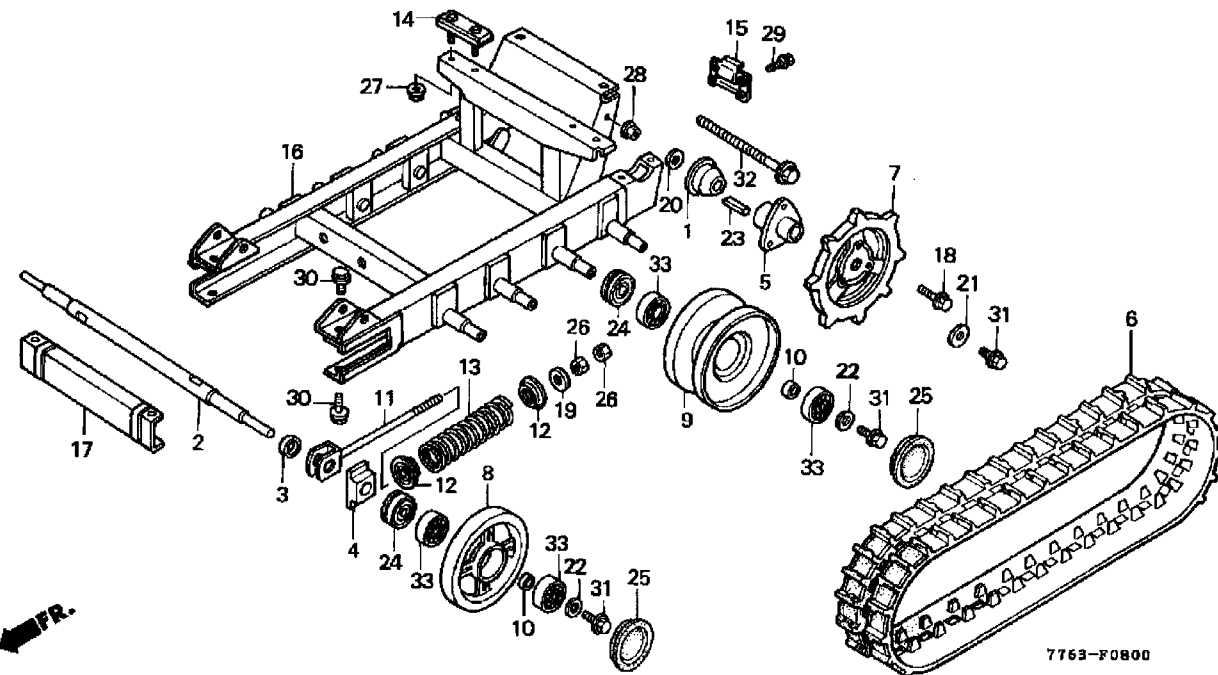
REF. N°	PART N°	DESCRIPTION	HP	FRAME N°
			500	FROM TO
			HK1	
1	24411-734-A00	GRIP, CHANGE LEVER	1	
4	42915-959-000	SPRING, ADJUSTING ARM	4	
5	43100-740-000	PANEL COMP., BRAKE	1	
6	43100-776-000	PANEL ASSY., BRAKE	1	
7	43125-GZ9-003	SHOE COMP., BRAKE (ASK)	2	
8	43141-740-000	CAM, BRAKE	1	
9	43210-751-003	DRUM COMP., BRAKE	1	
10	43410-740-000	ARM, BRAKE	1	
11	43417-776-000	SPRING, BRAKE ARM	1	
12	45133-044-000	SPRING, BRAKE SHOE	1	
13	45135-740-000	PLATE, BRAKE ARM SPRING	1	
14	50338-767-000	PLATE, L. STOPPER	1	
15	54311-767-000	LEVER, CHANGE	1	
16	80003-776-003	ARM COMP., CHANGE	1	
16	80003-776-004	ARM COMP., CHANGE	1	
17	80031-776-003	ROD COMP., CHANGE (A)	1	
17	80031-776-004	ROD COMP., CHANGE (A)	1	
18	80032-776-003	ROD COMP., CHANGE (B)	1	
18	80032-776-004	ROD COMP., CHANGE (B)	1	
19	80033-776-003	BRACKET, CHANGE ARM	1	
19	80033-776-004	BRACKET, CHANGE ARM	1	
20	80035-776-003	PIN, 6X20	1	
20	80035-776-004	PIN, 6X20	1	
21	90017-PE0-000	WASHER, 10MM	1	
22	90301-740-003	NUT, CASTLE, 10MM	1	



7753-F0600B

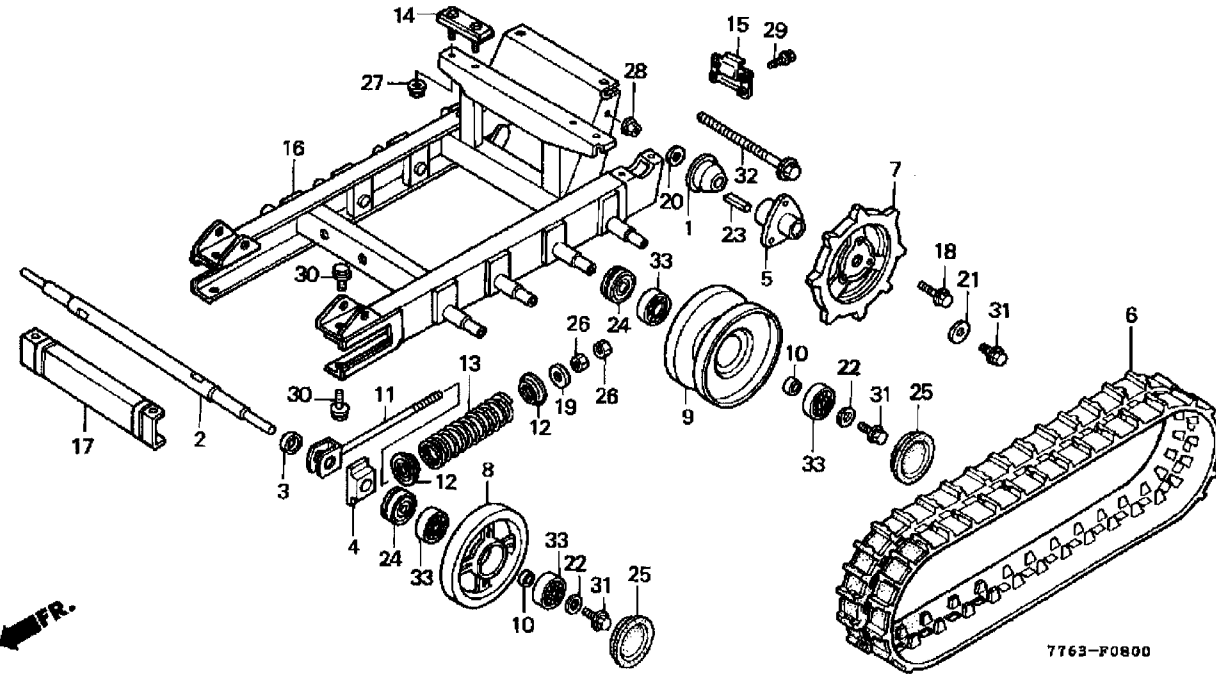
SERVICE ITEM	F.R.T

REF. N°	PART N°	DESCRIPTION	HP 500 HK1	FRAME N° FROM	TO
23	90309-ML3-791	NUT, U, 8MM	1		
24	90501-767-000	WASHER, FRICTION	4		
25	90502-767-000	WASHER, FRICTION SETTING	4		
26	90529-126-770	WASHER, 10.5MM	1		
27	91262-740-003	SEAL, BRAKE CAM	1		
28	91352-740-003	O-RING, 100X2	1		
29	92101-05028-0A	BOLT, HEX., 5X28	1		
30	92101-06020-0H	BOLT, HEX., 6X20	2		
31	94001-06080-0S	NUT, HEX., 6MM	2		
32	94001-08080-0S	NUT, HEX., 8MM	2		
33	94050-05000	NUT, FLANGE, 5MM	1		
34	94101-08800	WASHER, PLAIN, 8MM	1		
35	94103-08800	WASHER, PLAIN, 8MM	1		
36	94201-20200	PIN, SPLIT, 2.0X20	1		
37	94251-06400	PIN, LOCK, 6MM	1		
38	94251-08400	PIN, LOCK, 8MM	1		
39	94305-50202	PIN, SPRING, 5X20	1		
40	95701-08016-00	BOLT, FLANGE, 8X16	2		
41	95801-06028-00	BOLT, FLANGE, 6X28	2		



SERVICE ITEM	F.R.T
GUARD. CRAWLER GRASS :LEFT	0,4
GUARD. CRAWLER GRASS :RIGHT	0,4
SHAFT. WHEEL	0,9
CRAWLER :LEFT	0,4
CRAWLER :RIGHT	0,4
CRAWLER :BOTH	0,7
SPROCKET. CRAWLER :LEFT	0,4
SPROCKET. CRAWLER :RIGHT	0,4
SPROCKET. CRAWLER :BOTH	0,7
WHEEL. CRAWLER :LEFT FRONT	0,5
WHEEL. CRAWLER :RIGHT FRONT	0,5
WHEEL. INDUCTION(ONE) :LEFT	0,4
WHEEL. INDUCTION(ONE) :RIGHT	0,4
WHEEL. INDUCTION :LEFT ALL	0,7
WHEEL. INDUCTION :RIGHT ALL	0,7
BOLT. CRAWLER TENSION :LEFT	0,6
BOLT. CRAWLER TENSION :RIGHT	0,6
BODY. FRAME	3,6
MEMBER. FRONT CROSS	0,1
BEARING. WHEEL SHAFT(ONE) :LEFT FRONT INNER	0,4
BEARING. WHEEL SHAFT(ONE) :RIGHT FRONT INNER	0,4
BEARING. WHEEL SHAFT(ONE) :LEFT FRONT OUTER	0,4
BEARING. WHEEL SHAFT(ONE) :RIGHT FRONT OUTER	0,4
BEARING. INDUCTION WHEEL(ONE) :LEFT INNER	0,4

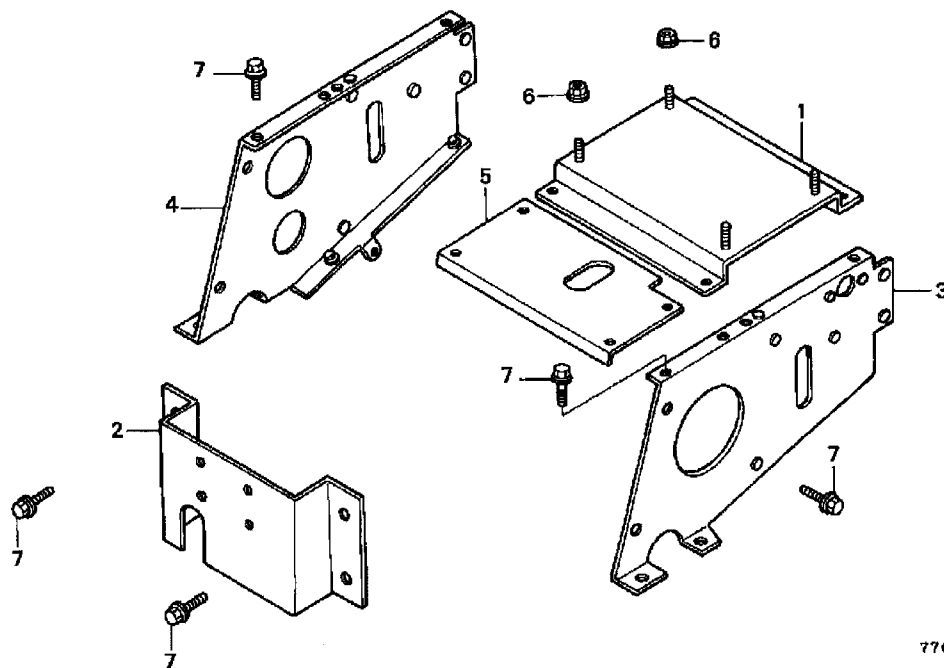
REF. N°	PART N°	DESCRIPTION	HP	FRAME N°
			500	FROM TO
			HK1	
1	21912-742-000	GUARD, GRASS	2	
2	42311-740-000ZA	SHAFT, FR. WHEEL,*NH1*,BLACK	1	
3	42312-742-000	COLLAR, FR. SHAFT	2	
4	42313-740-003	SLIDER, CRAWLER TENSION	2	
5	42703-740-000	HUB, CRAWLER SPROCKET	2	
6	42755-742-000ZA	CRAWLER (60PX37L),*NH1*,BLACK	2	
7	42756-742-000	WHEEL, DRIVE SPROCKET	2	
8	42757-740-000ZA	WHEEL, DRIVEN,*NH1*,BLACK	2	■
8	42757-740-000	WHEEL, DRIVEN	2	■
9	42758-740-010ZA	WHEEL, INDUCTION,*NH1*,BLACK	8	■
9	42758-740-010	WHEEL, INDUCTION	8	■
11	42771-742-010	BOLT, CRAWLER TENSION	2	
12	42772-742-000	HOLDER, TENSION SPRING	4	
13	42773-742-000	SPRING, CRAWLER TENSION	2	
14	52111-742-700	RUBBER, CARRIER MOUNTING	2	
15	63516-742-700	PLATE, DUMP LOCK	1	
16	80004-776-003	FRAME COMP., CRAWLER	1	■
16	80004-776-004	FRAME COMP., CRAWLER	1	■
17	80005-776-003	CROSSMEMBER COMP.	1	■
17	80005-776-004	CROSSMEMBER COMP.	1	■
18	90130-MC7-000	BOLT, UBS, 10X34	6	
19	90401-371-000	WASHER, 12.2X33X3.2	2	
21	90504-ZA0-000	WASHER, 10.5MM	2	
22	90531-703-000	WASHER, SPECIAL, 10MM	10	
23	90760-740-010	KEY, 5X5	2	



SERVICE ITEM	F.R.T
BEARING. INDUCTION WHEEL(ONE) :RIGHT INNER	0,4
BEARING. INDUCTION WHEEL(ONE) :LEFT OUTER	0,4
BEARING. INDUCTION WHEEL(ONE) :RIGHT OUTER	0,4
BEARING. INDUCTION WHEEL :LEFT ALL	0,7
BEARING. INDUCTION WHEEL :RIGHT ALL	0,7

REF. N°	PART N°	DESCRIPTION	HP	FRAME N°
			500	FROM TO
			HK1	
24	91256-740-003	OIL SEAL, 24X47X15	10	
25	91261-740-003	PLUG, SEAL, 47X10	10	
26	94030-12200	NUT, HEX., 12MM	4	
27	94050-06000	NUT, FLANGE, 6MM	4	
28	94050-10000	NUT, FLANGE, 10MM	1	
29	95701-08016-00	BOLT, FLANGE, 8X16	4	
30	95701-08020-00	BOLT, FLANGE, 8X20	4	
31	95701-10025-00	BOLT, FLANGE, 10X25	12	
32	95801-10160-00	BOLT, FLANGE, 10X160	1	
33	96100-62040-00	BEARING, RADIAL BALL, 6204	20	

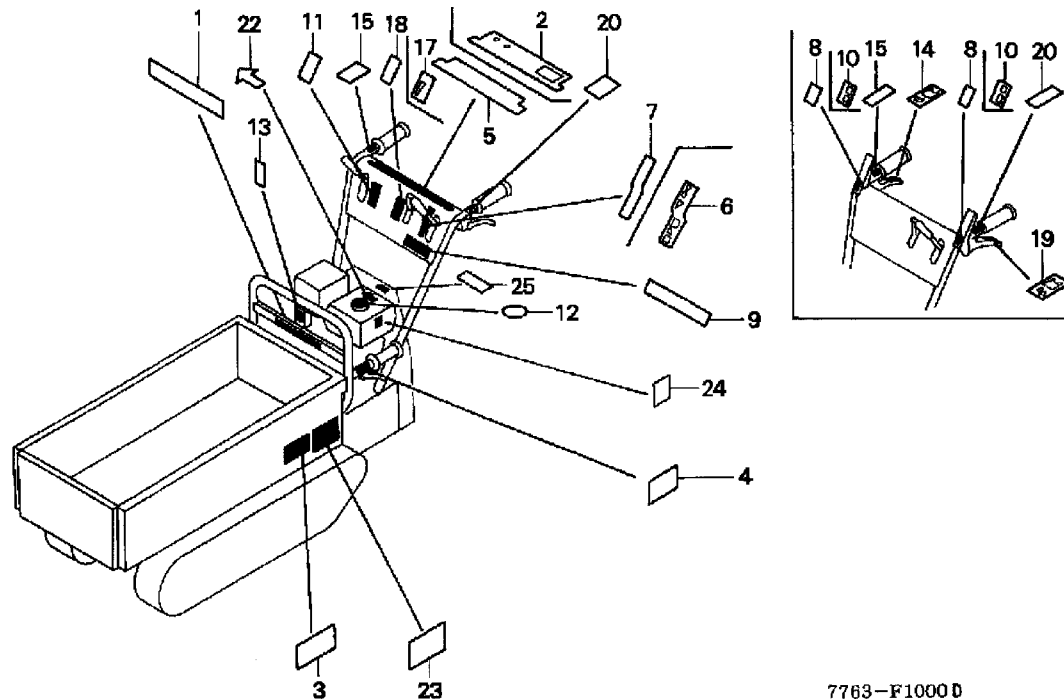




SERVICE ITEM	F.R.T
BASE. ENGINE MOUNT	0,5
.INCLUDES: Engine removal and installation	
PLATE. DUMPER LOCK BASE	0,2
FRAME. MAIN :LEFT	1,1
.INCLUDES: Engine removal and installation	
FRAME. MAIN :RIGHT	1
.INCLUDES: Engine removal and installation	
COVER. MAIN FRAME TRANSMISSION	0,1

7769-F0801

REF. N°	PART N°	DESCRIPTION	HP 500 HK1	FRAME N° FROM TO
1	80001-776-003	BASE COMP., ENGINE	1	
1	80001-776-004	BASE COMP., ENGINE	1	
2	80012-776-003	PLATE, DUMPER LOCK BASE	1	
2	80012-776-004	PLATE, DUMPER LOCK BASE	1	
3	80017-776-003	FRAME COMP., L. MAIN	1	
3	80017-776-004	FRAME COMP., L. MAIN	1	
4	80018-776-003	FRAME COMP., R. MAIN	1	
4	80018-776-004	FRAME COMP., R. MAIN	1	
5	80020-776-003	COVER, TRANSMISSION	1	
5	80020-776-004	COVER, TRANSMISSION	1	
6	94050-08000	NUT, FLANGE, 8MM	4	
7	95701-08016-00	BOLT, FLANGE, 8X16	16	



7763-F1000 D

SERVICE ITEM

F.R.T

NO INFORMATION

REF. N°	PART N°	DESCRIPTION	HP 500 HK1	FRAME N°	
				FROM	TO
1	87101-742-000	EMBLEM	1		
1	87101-742-000	EMBLEM	1		
1	87101-742-010	EMBLEM	1		2203434
1	87101-742-010	EMBLEM	1		
2	87101-776-A40	LABEL, OPERATION (A)	1	2203435	
4	87107-740-630	MARK, LOCK LEVER	1		
6	87201-776-A40	MARK, CHANGE INDICATION	1		
9	87316-767-000	MARK (H.S.T.)	1		
10	87512-740-A40	MARK, CLUTCH INDICATION	2		
13	87528-733-E90	MARK, CHOKE (H=36)	1		
13	87528-733-E90	MARK, CHOKE (H=36)	1		2210056
13	87528-733-E91	MARK, CHOKE (H=34)	1		
13	87528-733-E91	MARK, CHOKE (H=34)	1	2210057	
14	87531-740-A40	MARK, R. SIDE CLUTCH	1		
17	87532-776-A40	MARK, THROTTLE (HP)	1		
19	87535-740-A40	MARK, L. SIDE CLUTCH	1		
24	87616-747-F40	LABEL, NOISE LEVEL (99)	1		
24	87616-747-F40	LABEL, NOISE LEVEL (99)	1	2202875	